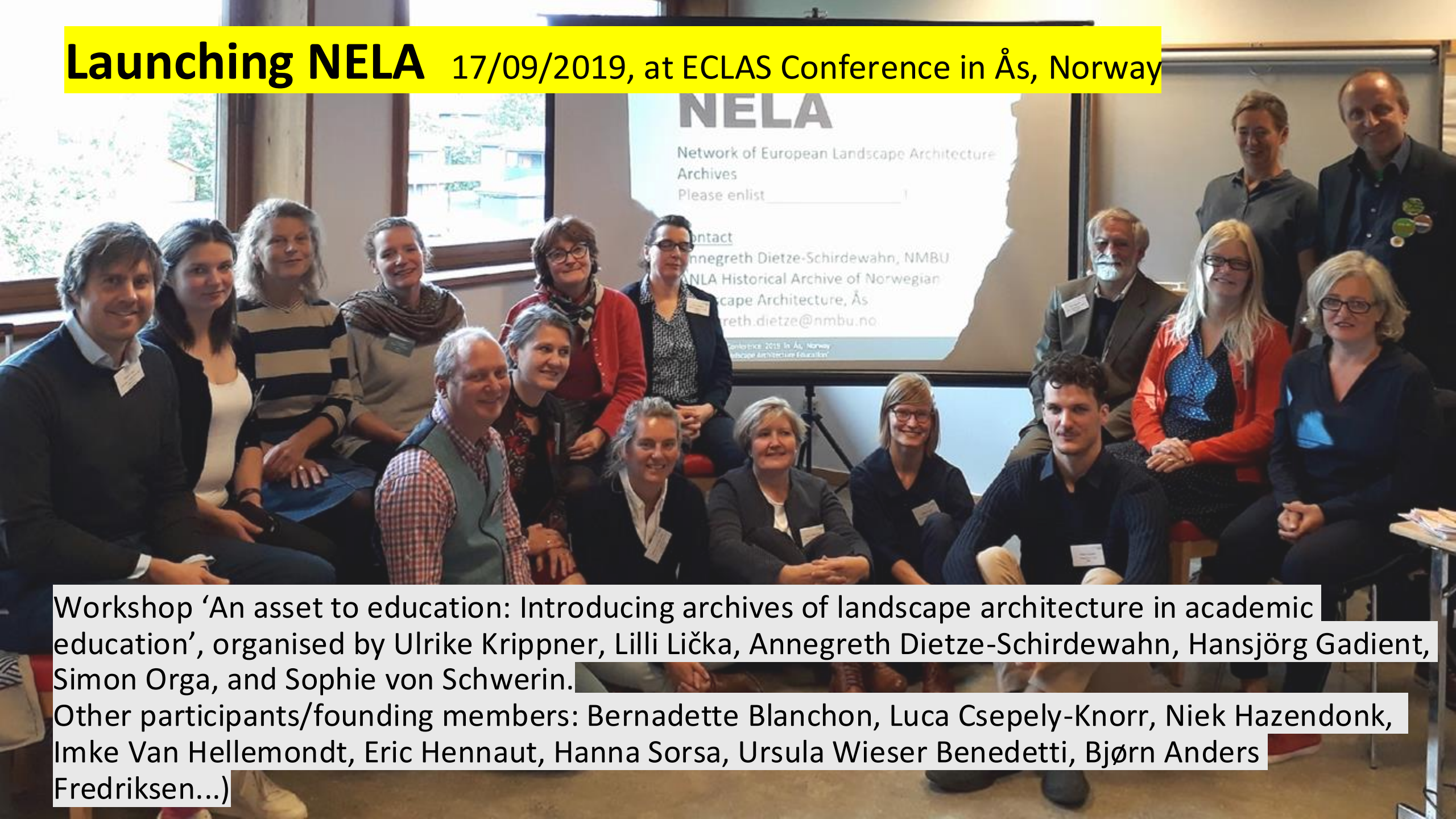


5 YEARS OF NELA

2019-2024

Launching NELA 17/09/2019, at ECLAS Conference in Ås, Norway



Workshop 'An asset to education: Introducing archives of landscape architecture in academic education', organised by Ulrike Krippner, Lilli Lička, Annegreth Dietze-Schirdewahn, Hansjörg Gadiant, Simon Orga, and Sophie von Schwerin.

Other participants/founding members: Bernadette Blanchon, Luca Csepely-Knorr, Niek Hazendonk, Imke Van Hellemond, Eric Hennaut, Hanna Sorsa, Ursula Wieser Benedetti, Bjørn Anders Fredriksen...)

Monthly online meetings

start on 25/03/2020



second virtual meeting 29/04/2020

- NELA Mission Statement;
- Book Chapter

First virtual meeting 25/03/2020

NELA

Network of European Landscape Architecture Archives

VIRTUAL NELA MEETING Wednesday March 25th 2020 1:00 am. 11:00am

We would like to start a continuous communication format in order to get organizational steps done and develop exciting projects together – be they collaborative research or publications, be they exchange formats or any other activity.

The first meeting is scheduled next Wednesday, March, 25th, 2020 – sorry for the late announcement – it is due to all these other excitements. We plan follow up meetings every last Wednesday of the month. We try to get the schedule out much more in advance in the future.

This first invitation goes out to the founding members. In the first meeting, we want to discuss how we can set up a pragmatic working structure and establish the network step by step.

Topics for March, 25th 2020:

1 Organization:

How shall we organize

How can we set up a communication structure?

How do we share tasks and responsibilities?

Next steps to establish the network

Where can we get funding for a) the structure itself and b) projects and/or c) exchange formats?

How do we reach the public (Homepage, newsletters, ...)?

Content-related points:

Suggestion of a quality agreement

Topics to be discussed and developed

List of tasks and rough ranking

The Mission Statement

09/06/2020

NELA Network of European Landscape Architecture Archives

MISSION STATEMENT

Aims of the network

The Network of European Landscape Architecture Archives (NELA) seeks to enhance the quality, visibility, and use of landscape architecture archival institutions and to raise awareness of the importance of collecting landscape archival material. Its goal is to help support the practice and profession of landscape architecture, to promote historical research, and to instil in future professionals and scholars an awareness of the historical continuum.

DISCLOSE, CONNECT, PRESERVE, INFORM, RESEARCH, EDUCATE

NELA offers an exchange of experience and knowledge relating to acquisition, the custody and use of landscape architectural archives, and the provision of public access. The topics covered range from collecting, inventorying, preservation, restoration, digitization, creating repositories, using archival documents, and information in practice to research and teaching.

Guidelines

- NELA members adhere to the Universal Declaration on Archives adopted by the International Council on Archives in 2010, and by UNESCO on 10 November 2011, appended in [Annex I](#).
- NELA members adhere to the Code of Ethics appended in Annex II.
- NELA member archives' focus, in terms of geography and content, is coherent with the relevant cultural, historical, and political context.
- NELA member archives are of a non-commercial character.
- Archival material should be made publicly accessible in digital and/or analogue form.
- The network provides a point of contact for people who wish to donate, deposit, or use archives. NELA member Archives offer advice and counselling to private/public institutions and private persons holding landscape architecture archives; they accept donations and deposits.
- NELA member Archives support professionals in garden and landscape heritage, work involving restoration or redesign, and any other landscape design task by providing information (e.g. original plans, etc.).

Members agree to support the activities of NELA:

- o to increase the significance of landscape architecture archives, to highlight the importance of collecting landscape archival material, and to give NELA member Archives international visibility
- o to share experience and collaborate in teaching
- o to develop collaboration in research and the dissemination of ideas (publications, exhibitions, etc.)
- o to develop joint projects and apply for funding (project types include joint research/teaching projects, exhibitions, acquisition, publications, and visits to other member archive centres)
- o to address professional and academic associations (ECLAS, IFLA-Europe, ICOMOS and ICOMOS-IFLA, national professional associations, etc.)

Membership types

NELA is a network for institutions and individuals whose interest it is to enhance the importance of landscape architectural archives and archival work and to further mutual international support on a European level.

- 1 - **Institutional members:** Institutions and organizations (e.g. archives, libraries, universities) that manage and conserve collections and/or archives of landscape architecture and which have expertise in one or more areas related to the aims of NELA
- 2 - **User members:** Institutions and organizations of any kind (e.g. schools, research institutions, professional practices) that have expertise in one or more areas related to the aims of NELA and make use of landscape architecture collections/archives for practice, research and/or educational purposes
- 3 - **Affiliate members:** Institutions and organizations other than those in category 1 and 2 that are interested in landscape architecture archives, historical research, and education and wish to support the aims and activities of NELA
- 4 - **Individual members:** People with an interest and/or expertise in one or more areas related to the aims of NELA

Interested institutions and individuals can send an email to the NELA contact address with a request for membership in one of the categories. They should include information about their professional and institutional background and their focus of interest in NELA.

The Book Chapter published in 2023

Table of Contents

1. Broadening the outlook, expanding horizons

Diedrich Bruns and Stefanie Hennecke

PART I: Challenges and perspectives

2. Introducing the field of landscape architecture education research: challenges and perspectives

Diedrich Bruns and Stefanie Hennecke

3. 'A thing in movement': landscape history in professional curricula

M. Elen Deming

4. Tracing discourses: learning from the past for future landscape architecture

Mattias Qviström and Märit Jansson

5. European cooperation between educators and landscape architecture schools

Richard Stiles

6. Building up historical continuity: landscape architecture archives in education

Lilli Lička, Bernadette Blanchon, Luca Csepely-Knorr, Annegreth Dietze-Schirdewahn, Ulrike Krippner, Katalin Tákács, Sophie von Schwerin and Roland Tusch

...

ROUTLEDGE
ROUTLEDGE
INTERNATIONAL
HANDBOOKS



The Routledge Handbook of Landscape Architecture Education

Edited by Diedrich Bruns and Stefanie Hennecke

5th online meeting / 'Wishlist'

29/07/2020

Seek funding through project applications:

- AHRC
- COST Action

Raise awareness through dissemination:

- Journal articles, book chapters...
- NELA website
- Presentations on meetings and conferences

Sustainable organisation:

- take turns to chair monthly meetings

NELA Network of European Landscape Architecture Archives

5th VIRTUAL NELA MEETING

Wednesday July 29th 2020 11:00 – 12:30 / 13:00

Agenda/Topics

1 Projects

- AHRC/UK: 75th anniversary of IFLA 2023 (lead: Luca)
- COST action: Lilli, Marlies, Lei

2 Publications

working groups report and find new members, support, answers if necessary

- Text for professional associations/websites (Lilli), stadt + grün is translated as a basis for everyone in their own country, feel free to extract, complement, add....
- Article for Journal (Roland)
- Article for Landscape architecture education history book (Lilli)
- Website SAH /UK (Luca)

3 Expenses

ILA covered English editing of mission statement and stadt+grün publication.
How do we share the expenses in the future?

4 Versailles conference

did anyone apply?

5 ECLAS Strategy Days, report on NELA?

Invitation by Ellen Fetzer,

6 Applications

Hungary (see members)
IFLA Europe (Niek Hazendonk)

7 Who takes over to organize the next five meetings?

8 Access to drive

9 Other issues

Suggested agenda: Lilli Lička

AHRC (Arts and Humanities Research Council, UK) funded project IFLA 75: Uncovering Hidden Histories in Landscape Architecture

2020-2021 project application

2022 granted

INTERNATIONAL FEDERATION OF LANDSCAPE ARCHITECTS
FEDERATION INTERNATIONALE DES ARCHITECTES-PAYSAGISTES
Council Meeting, Paris, 16.6.49.

Attendance.

Signature	Country
1. J. J. J.	Gr. Britain
(Name)	Finland
Yvan B. B.	France
(Name)	Gr. Britain
8. C. C.	Gr. Britain
(Name)	Gr. Britain
Walter H. H.	Paris, Bas.
Ch. C.	Swiss
D. D.	Belgium
F. F.	
M. M.	Sweden
(Name)	
(Name)	

IFLA 75
INTERNATIONAL FEDERATION
OF LANDSCAPE ARCHITECTS

19:00 BST
22nd June 2023

Museum of English Rural Life
University of Reading
Conference Room

Or online:
<https://bit.ly/IFLA75-roundtable>

IFLA 75:
THE HISTORY AND IMPACT
OF A PROFESSIONAL NETWORK
A ROUNDTABLE DISCUSSION

Image © CIVA

AHRC project IFLA 75 - workshops 2023-2024



AHRC project IFLA 75: online exhibition and webpage

LANDSCAPE ARCHITECTURE AND THE ESTABLISHMENT OF THE INTERNATIONAL FEDERATION OF LANDSCAPE ARCHITECTS (IFLA)

Established in Cambridge in 1948, IFLA today represents 77 national associations and its mission to create "globally sustainable and balanced living environments for the benefit of humanity worldwide", could not be more relevant.

As part of the AHRC funded project *IFLA 75: Uncovering Hidden Histories in Landscape Architecture*, this document represents the culmination of a series of collaborative information-sharing workshops that explored the establishment of IFLA as it celebrates 75 years since it began. The document is a series of national snapshots, giving an overview of landscape architecture in each country, focusing on the year 1948. Together these national profiles make up an important transnational history of the IFLA network in the post war years.

Through collaboration, this project engaged the main European archives that hold significant landscape architectural materials, along with educators, researchers and third-party organisations. The aim was to consolidate and disseminate a shared history of IFLA, and, through understanding its history, assess its role for the future. This document goes some way towards supporting this goal.

Each *National Profile* is structured under three headings; *Landscape Architecture in 1948*, *Notable Individuals and IFLA Conference Reports*. This structure helps with building a comparative history, enabling an understanding of the extent of the networks between countries. For some countries, there is a lot of data to share, for others, their national histories of landscape architecture do not emerge until later.

List of Delegate Countries for the first IFLA Conference, 1948

Austria	Italy
Belgium	Norway
Chile	Poland
Denmark	Spain
Finland	Sweden
France	Switzerland
United Kingdom	United States of America
The Netherlands	

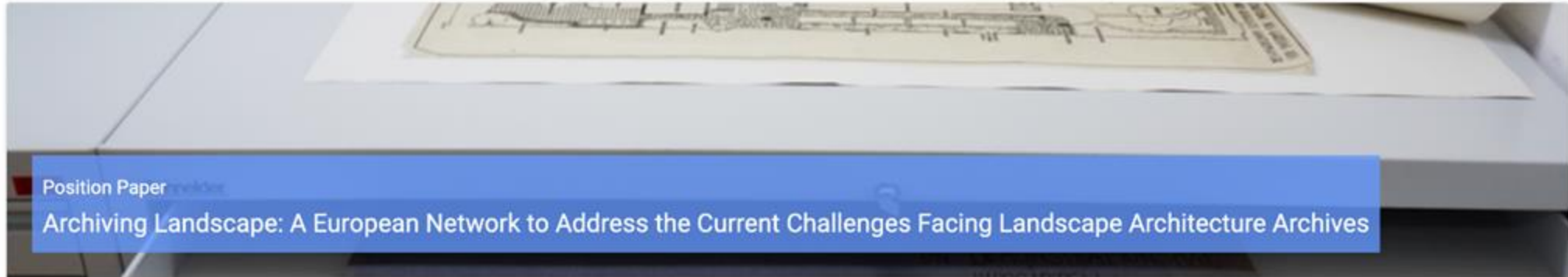
Joint Dissemination Activities

Two journal articles and book contributions

Five international presentations

Associations, Conferences, lectures

Journal article published in 2024



Abstract

Each open space exists within a historical continuity on which decisions about its future development should be based. Landscape architecture archives are the basis for a deeper understanding of the history of designed open spaces and help historians and landscape architects to understand the design concepts and genesis of open spaces. In practice, there is still little awareness of the importance of adequate historical research as a foundation for making appropriate future decisions in the face of global challenges. The fragile character of designed landscapes, the role of vegetation and the scale of projects and plans present archives with specific challenges. To meet these challenges, expertise from different disciplines is required. Historians, art historians, archivists and landscape architects share their experience on these topics in the Network of European Landscape Architecture Archives (NELA) and expand the knowledge of archiving landscape architecture in collaborative projects. The aim of this paper is to explain the relevance of landscape architecture archives for research, education and practice; to delineate challenges for landscape architecture archives and their use; and to address emerging issues that further research in this field may be facing.

Keywords

landscape architecture, archives, historiography, open space development, Network of European Landscape Architecture Archives (NELA)

Share



Authors

- Roland Tusch (University of Natural Resources and Life Sciences, Vienna) 
- Marlies Brinkhuijsen  (Wageningen University and Research) 
- Luca Csepely-Knorr  (University of Liverpool) 
- Lars Hopstock  (University of Kaiserslautern-Landau (RPTU)) 
- Ulrike Krippner  (University of Natural Resources and Life Sciences, Vienna) 
- Hanna Sorsa-Sautet  (École nationale supérieure de paysage Versailles) 

Downloads

Workshop at ECLAS Conference 2021, Uppsala

14/09/2021

Archives of Landscape Architecture in the Digital Era



Digital collection

Public access

Digitization

Standards

Preserve knowledge

Quality

Workshop at ECLAS Conference 2022, Ljubljana

13/09/2022

Landscape Architecture Collection Strategies



Workshop at ECLAS Conference 2023, Brno

12/09/2022

Points of interest: Connecting the Landscape architecture archives in Europe



LABYRINTH OF THE WORLD Landscape Crossroads

ECLAS Conference 2023
Czech Republic
10–13 September
BRNO – LEDNICE

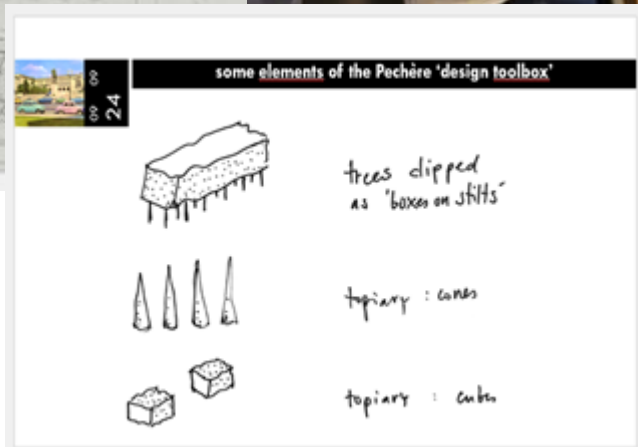
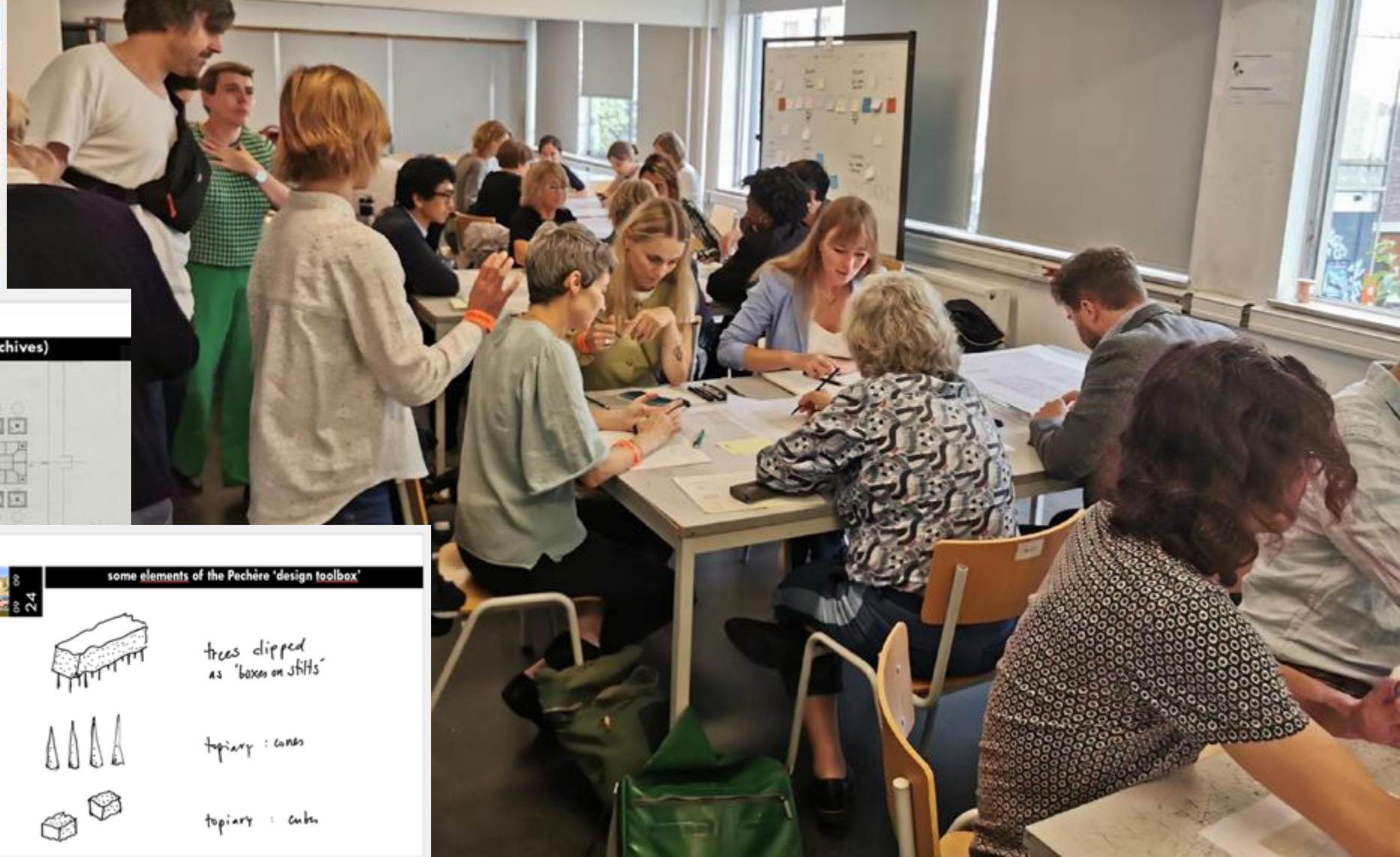
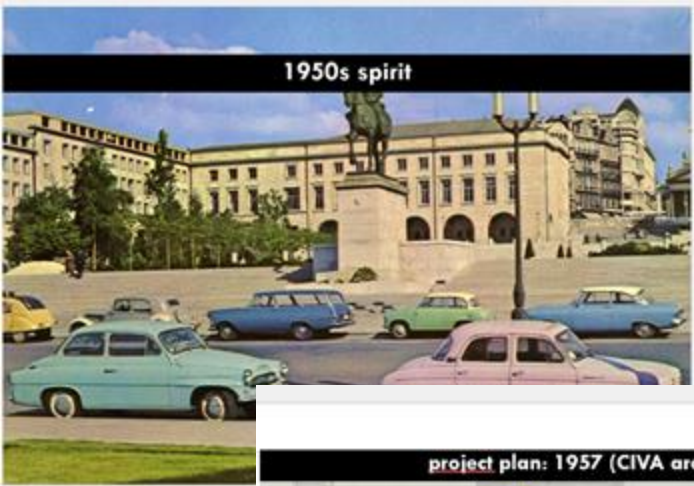
ECLAS
EUROPEAN COUNCIL OF
LANDSCAPE ARCHITECTURE
SCHOOLS

● Mendelova
● univerzita
● v Brně
●

Workshop at ECLAS Conference 2024, Brussels

09/09/2024

Speed design with LA Archives: Mont des Arts, Brussels



NELA webpage (at IFLA-Europe)

iflaeurope.eu/index.php/site/general/nela-foundation



Search



IFLA



IFLA AFRICA



IFLA AMERICAS



IFLA ASIA-PACIFIC



IFLA MIDDLE-EAST

[About Us](#)

[Membership](#)

[Communications](#)

[Education](#)

[Professional Practice](#)

[IFLA Europe Projects](#)

[News](#)

[Support us](#)

[Youth Competition](#)

NELA European Network of Landscape Architecture Archives

IFLA Europe - International Federation of Landscape Architects

...NELA website on the way

Multilingual Archival Glossary Project / 'Mini-lectures' on archival glossary & practice

Dec.2020-

Cover all the languages extant within NELA in order to turn the glossary into an efficient work-tool within our network

The image displays a grid of 17 thumbnail images, each representing a 'Mini-lecture' on a specific archival term. The thumbnails are arranged in two rows: the first row contains 8 thumbnails and the second row contains 9. Each thumbnail includes a title, a definition, and some key points or examples.

- Mini-lecture 1: Archival repository**
 - Agency or programme responsible for building, acquiring and preserving archives, ranging from national, and applying classification of other records
 - Agency or programme responsible for building, acquiring and preserving archives, ranging from national, and applying classification of other records
- Mini-lecture 2: Public records**
 - Record made by a public officer or a government agency in the course of the performance of a duty, whether or not by law or in pursuit of a public obligation
- Mini-lecture 3: Private records**
 - Records in the private sector as opposed to records in the public (governmental) sector
- Mini-lecture 4: Fonds**
 - The aggregate body of records accumulated in a historic process and created or received by a public or private individual or corporation (the 'founder entity') in the exercise of their corresponding activities and functions
- Mini-lecture 5: Respect des fonds**
 - The principle that a body of records originating from the same source creator must be preserved as a group
- Mini-lecture 6: Arrangement**
 - Deliberate arrangement is based on the principle that each document is related to a broader context of records that gives the document its meaning
- Mini-lecture 7: Disposal**
 - The action taken with regard to transparent records following their appraisal and the expiration of their retention periods as provided for by legislation, regulation, or administrative procedure
- Mini-lecture 8: Series Class**
 - A group of similar records that are arranged according to a filing system and that are created as the result of being created, received, or used in the same activity. Generally used as a substitute term of description when a title is not available
- Mini-lecture 9: Artificial Collection**
 - An artificial body of records accumulated according to common criteria defining their content or features, without consideration for their provenance and organization as fonds, which is created in an explicit or implicit way
- Mini-lecture 10: Archival record**
 - Any expression in oral or written language, in image or sound, either original or certified, recorded in any medium, recording the activities, actions or functions of any individual or organization, with the exception of published works forming part of bibliographic resources
- Mini-lecture 11: Record creator**
 - Individuals or entities that are used for creation of paper records in certain formats, such as books, photographs, brochures, articles, or videos. For records, the form and date are not relevant to identification. An organization, the founder of the records, is the record creator
- Mini-lecture 12: Provenance**
 - A fundamental principle of archives, referring to the individual, family, or organization that created or received the records in a collection. Contexts that records of different origins (governmental) are kept separate to preserve their context
- Mini-lecture 13: File**
 - A group of related documents treated as a single item for purposes of identification, storage, and retrieval. Secondary used as a substitute word of description within a fonds
- Mini-lecture 14: Archival description**
 - Descriptive tasks providing information that establishes context over records and facilitates their retrieval
- Mini-lecture 15: Finding Aid**
 - Specialized records of contextual and structural information about an archival collection. Contains information about the collection, such as acquisition and processing procedures, including administrative files or organizational notes, scope of the collection, including file, folders, media, geographic and temporal and an overview of the collection and its parts
- Mini-lecture 16: Acquisition policy**
 - How an institution or an archival institution will define the types of records it wants to acquire, the criteria for selection and retention, and the types of records it will accept

Multilingual Archival Glossary Project / 'Mini-lectures' on archival glossary & practice

Dec.2020-

Cover all the languages extant within NELA in order to turn the glossary into an efficient work-tool within our network

Mini-lecture 16

Deposit

Definition:
The documents covered by the action of being placed in the custody of an archive without legal transfer of title.

The deposit of archival documents involves the establishment of a contractual relationship between the donating donor and the receiving archive. The deposit contract takes the form of a simple private deed. The deposit contract stipulates in particular the conditions of conservation and transmission. In the event that the documents are taken back by their owner, it may stipulate that the contract is to be renegotiated after a certain period of time and relations between the donating donor and the receiving archive. The contract is renewable by either party.

Responsibilities	Donor	Archive
Ownership	Yes	No
Use	Yes	Yes
Cost	No	Yes
Transferability	Yes	Yes
Legal protection against	Expropriation by the donor	Indemnity, transmission, destruction

Mini-lecture 19

Donation

Definition:
Intention for which an object is transferred from one party to another without compensation.

Donation is a legal agreement that takes on the form of a private deed. It is a gift to a recipient, including the terms of the transfer of ownership of certain assets and the conditions of their use.

Legal agreements may specify use conditions, relevant public administration to be used in the management of the archive, other terms to which the donor and the recipient agree. It is recommended that the donation be made in writing.

- Letter of intent to donate, in which the donor indicates that he will make an archival deposit or set of documents for preservation.
- Letter of acceptance of the donation, in which the recipient accepts the deposit and articulates any terms and conditions for taking charge of the donation.
- Acceptance form signed by both the donor and the recipient, specifying the nature of the donation and including description and material importance of the documents.
- Receipt form (including the archive) and certifying that the archival deposit or set of documents has been received in the archives held by the archive, with an acknowledgment.

Mini-lecture 20

Disclosure

As Communicable:

Definition:
The permission to locate and obtain information for use, consultation or delivery without legal, contractual restrictions of privacy, confidentiality, and security clearance, access.

Any given archival record is deposited in the communication system, some documents are subject to access restrictions under the Public Access Policy, and there are specific access rights.

Private archives may also have access restrictions, either under the transfer agreement or under legislation.

There are exceptions to the general rule of public access to documents. They can be considered with a special procedure (open or 'à la carte').

Mini-lecture 21

Access policy

As:

Definition: A policy established by an archival repository governing which historical materials are available for research, who are authorized to examine them, and under what conditions.

Access policy sets out the access to the archival records, identified original and archival reproductions of the records, and multiple means of reproduction of the archival records held in digital and other formats.

The active accessibility also ensures that access to the archive is consistent and fair to all users and respects intellectual property and relevant legislation.

An original archival document can only be consulted in a controlled environment, in what is usually open or in a restricted consultation site.

The repository's decisions in relation to access to the archive and related aspects of document access. These rules also cover the responsibility for identifying and monitoring the access restrictions of the archive in accordance with legal and technical standards, and the use of digital records and other formats.

Mini-lecture 22

Conservation

As conservation:

Definition: Professional care / treatment of items in a collection in order to ensure their long-term preservation.

Conservation can be used in a broad sense, either to provide the action of repair or stabilization of an object through chemical or physical treatment, to ensure that they return to their original form as long as possible, or

to explain the problem described in the preservation of cultural property for the future through prevention, documentation, treatment, and prevention care, supported by research and education.

These activities are based on the conservation, notably the application of the principles:



Mini-lecture 23

Custody

As:

Definition: Care and control especially for security and preservation.

Care custody can be understood as the custody and the responsibility for ensuring proper handling of the records, especially in the physical domain.

Physical records with a high percentage of records, and require special care and control.

Physical records can be used to ensure the archival preservation and the related conservation work in order to ensure the integrity, authenticity, and availability of the records.

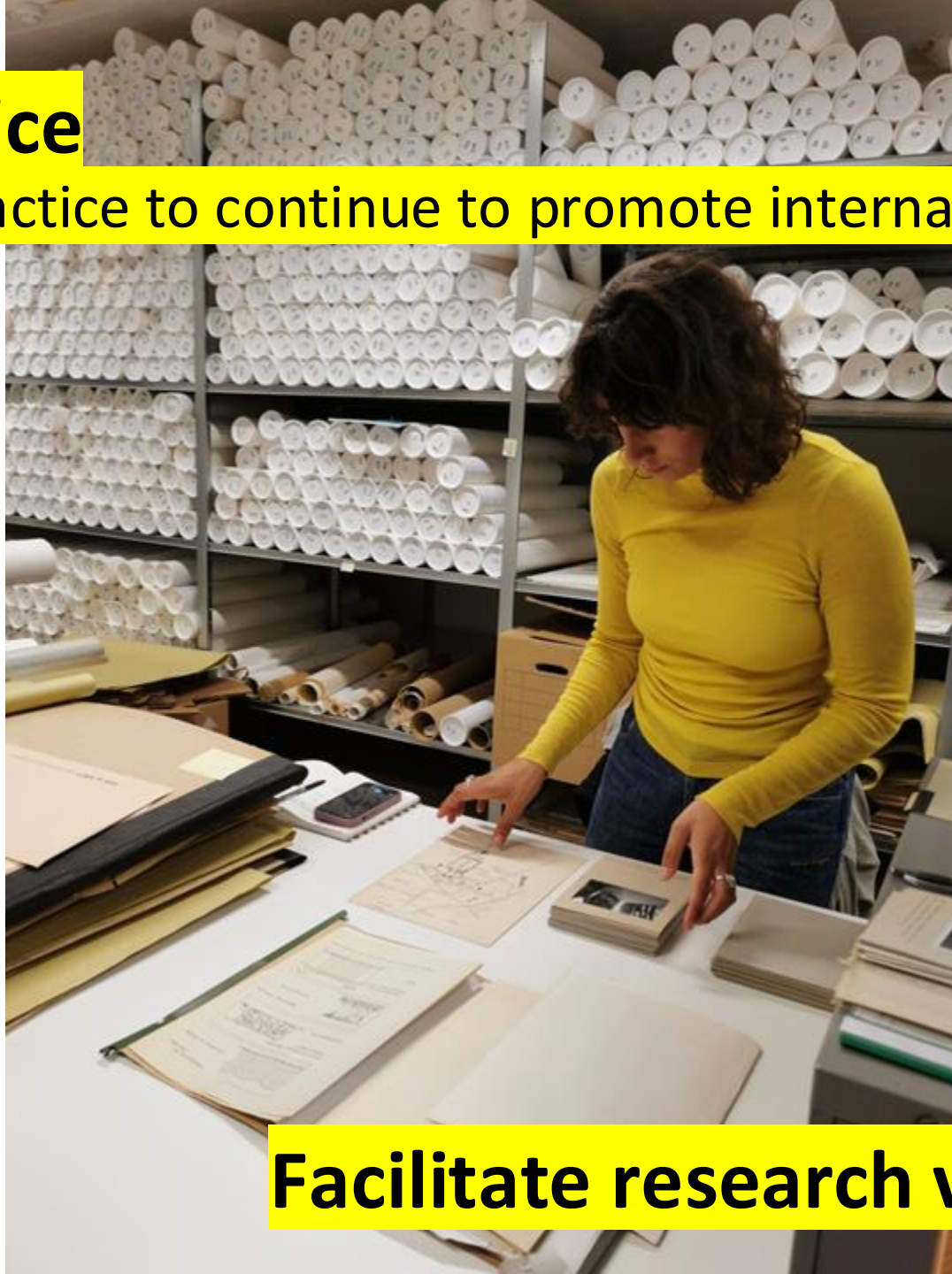
... and more activities

2020-2024

- internal presentations on members' research
- internal presentations of member archives
- invited guest lectures
- facilitate research visits (see next page)
- ...

Community of practice

Building a community of practice to continue to promote international access to data



Facilitate research visits

COST Action applications 2021, 2022, 2023



CONSENSUS EVALUATION REPORT

GENERAL OVERVIEW

Open Call Collection *OC-2021-1*
 Proposal Reference *OC-2021-1-25151*
 Proposal Title *Landscape Architecture Archives, a basis for enhancing the cultural value of landscapes*
 Proposal Acronym *LAVALAND*
 Review Panel *RP8 - Integrating innovative humanistic, historic, cultural and artistic approaches for societal developments*
 Evaluation Status *Final*

EVALUATION

SUMMARY TABLE

S&T EXCELLENCE			NETWORKING EXCELLENCE			IMPACT			IMPLEM ENTATIO N	Marks
Q1	Q2	Q3	Q4	Q5	Q6	Q7	Q8	Q9	Q10	Total
3	3	2	3	3	2	3	3	3	2	27

2021



CONSENSUS EVALUATION REPORT

GENERAL OVERVIEW

Open Call Collection *OC-2022-1*
 Proposal Reference *OC-2022-1-25862*
 Proposal Title *Research as a basis for Enhancing designed landscapes using Landscape Architecture Archives*
 Proposal Acronym *RELAA-X*
 Review Panel *RP6: The essential role of Humanities and Social Sciences in addressing complex and evolving world's challenges*
 Evaluation Status *Final*

EVALUATION

SUMMARY TABLE

S&T EXCELLENCE			NETWORKING EXCELLENCE			IMPACT			IMPLEM ENTATIO N	Marks
Q1	Q2	Q3	Q4	Q5	Q6	Q7	Q8	Q9	Q10	Total
3	3	3	4	4	4	4	5	4	4	38

2022

Dear all, we have decided to give it one more try. COST action for European Landscape architecture archives!
The schedule is ambitious, the reviews are +/- clear and we have started off going through the proposal again.

...ice, research and ed
...ulation panel. I incl

Subject: COST proposal CONNECT-

Dear all, dear colleagues,
this is good news and I am delighted to share this with you. I g-

Our COST proposal "Connecting Landscape Architecture Archives to enhance Europe
(CONNECT-LAA) was chosen to be implemented - we had the best of all scores (50 out of 100)



Brussels, 17 May 2024

COST 041/24

DECISION

Subject: Memorandum of Understanding for the implementation of the COST Action "Connecting Landscape Architecture Archives to enhance European landscape practice, research and education" (ConnectLAA) CA23128

**Third proposal for
COST Action
successful**

cost



COST Action Aims

- Enlarge and Deepen European Network of Landscape Architect (LA) Archives and collections
- Cultural transfer like cross-sectoral and cross-national correlation
- Support capacity how archives refine the European LA narrative
- Enhance knowledge production



A Toast to the Future of NELA!!!!

