

4th group

# INTO THE WOODS

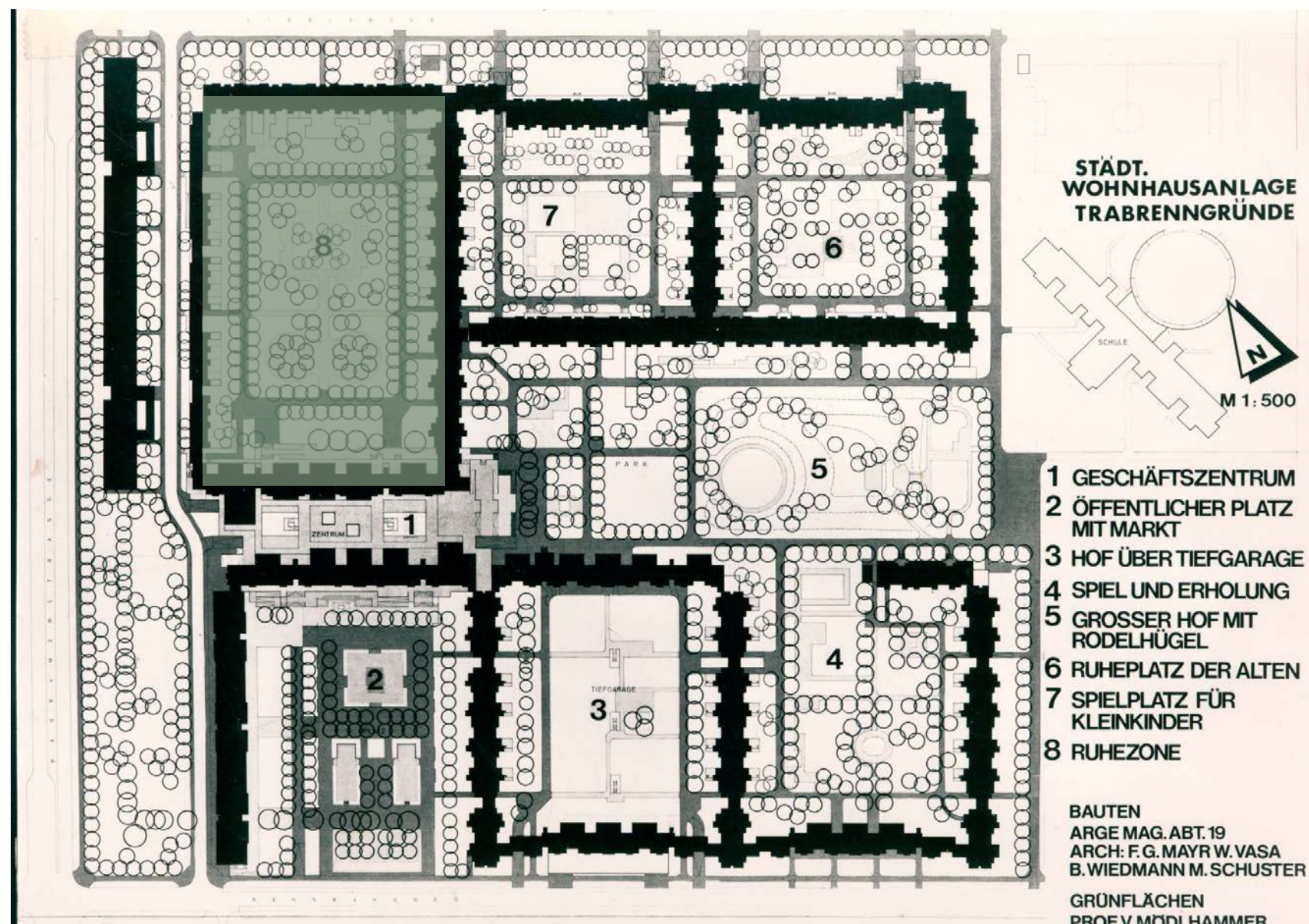
Courtyard Number 8



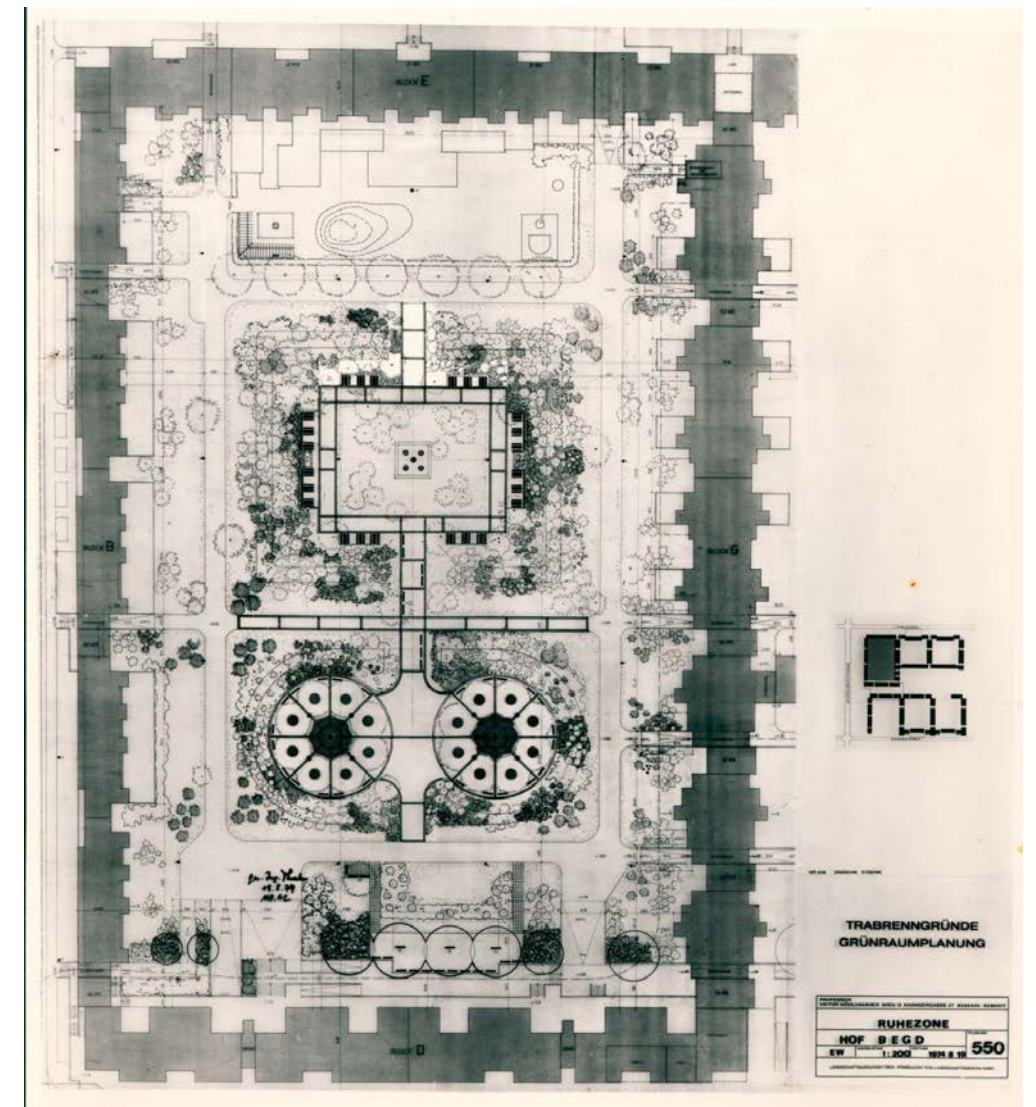


# General introduction

Viktor Mödlhammer originally designed this courtyard as a resting place for the elderly. The densely planted topography, about 1.5 metres high, forms an enclosed space - Mödlhammer called it a "green wall against noise and views from the surroundings". The original seating niches for meetings or solitary moments no longer exist. The second part of the area is formed by two circles surrounded by a lower slope than in the first area. Characteristic of this place are the plane trees that form a dense canopy above it.



location of the courtyard



early plan by Viktor Mödlhammer

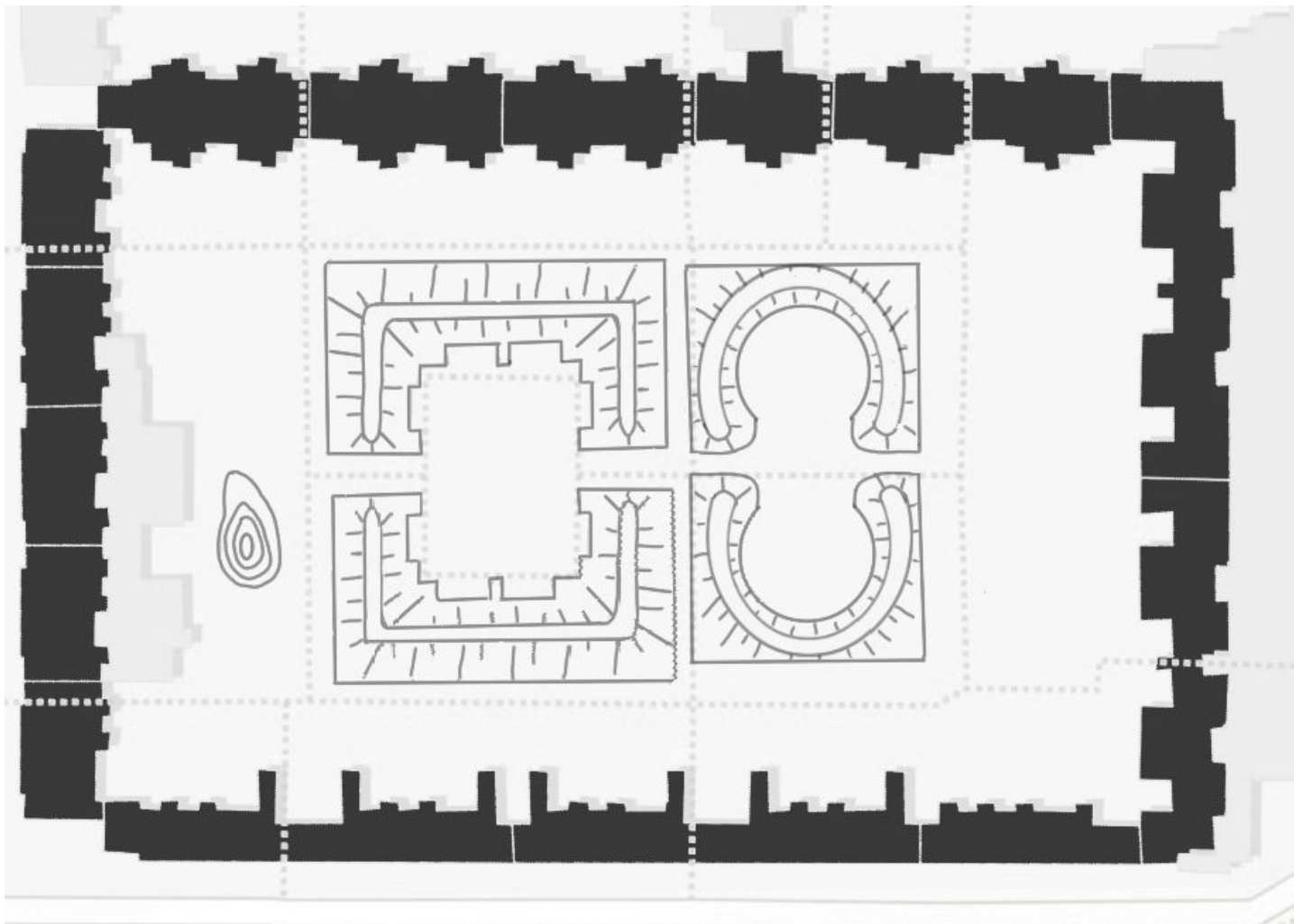
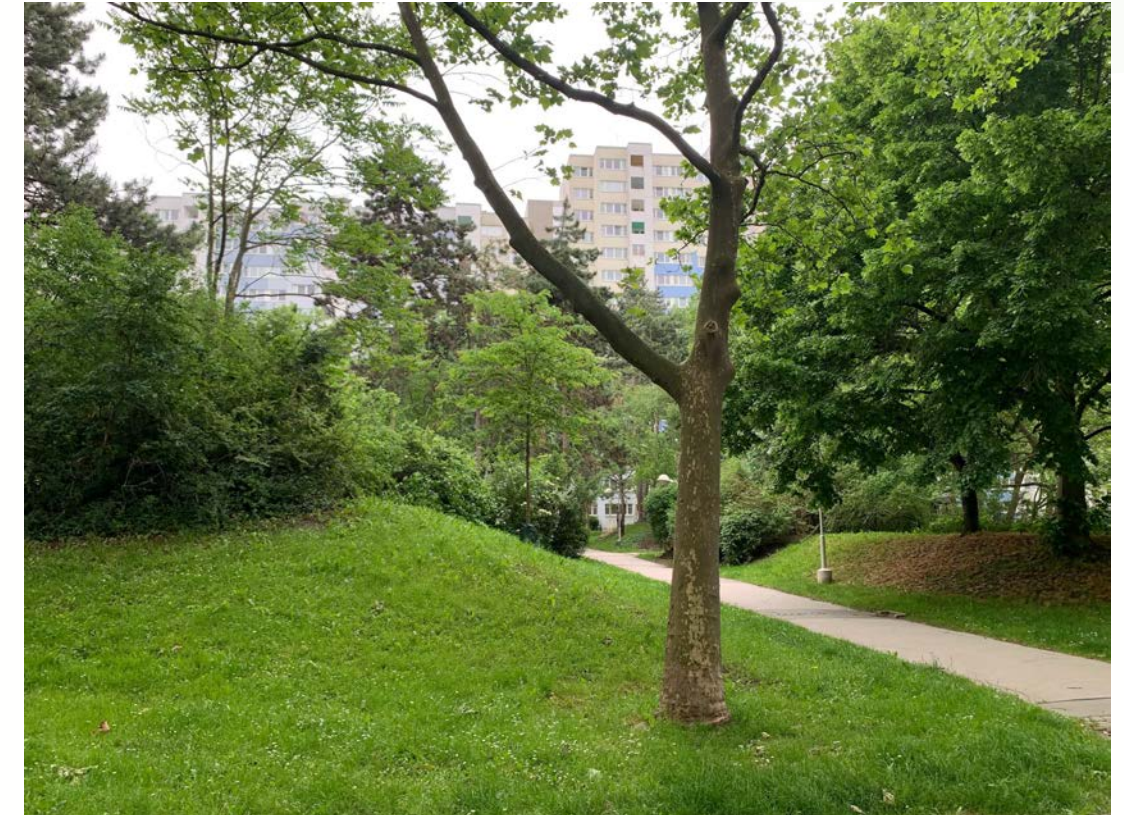


newly planted plane trees in the circle



# Topography

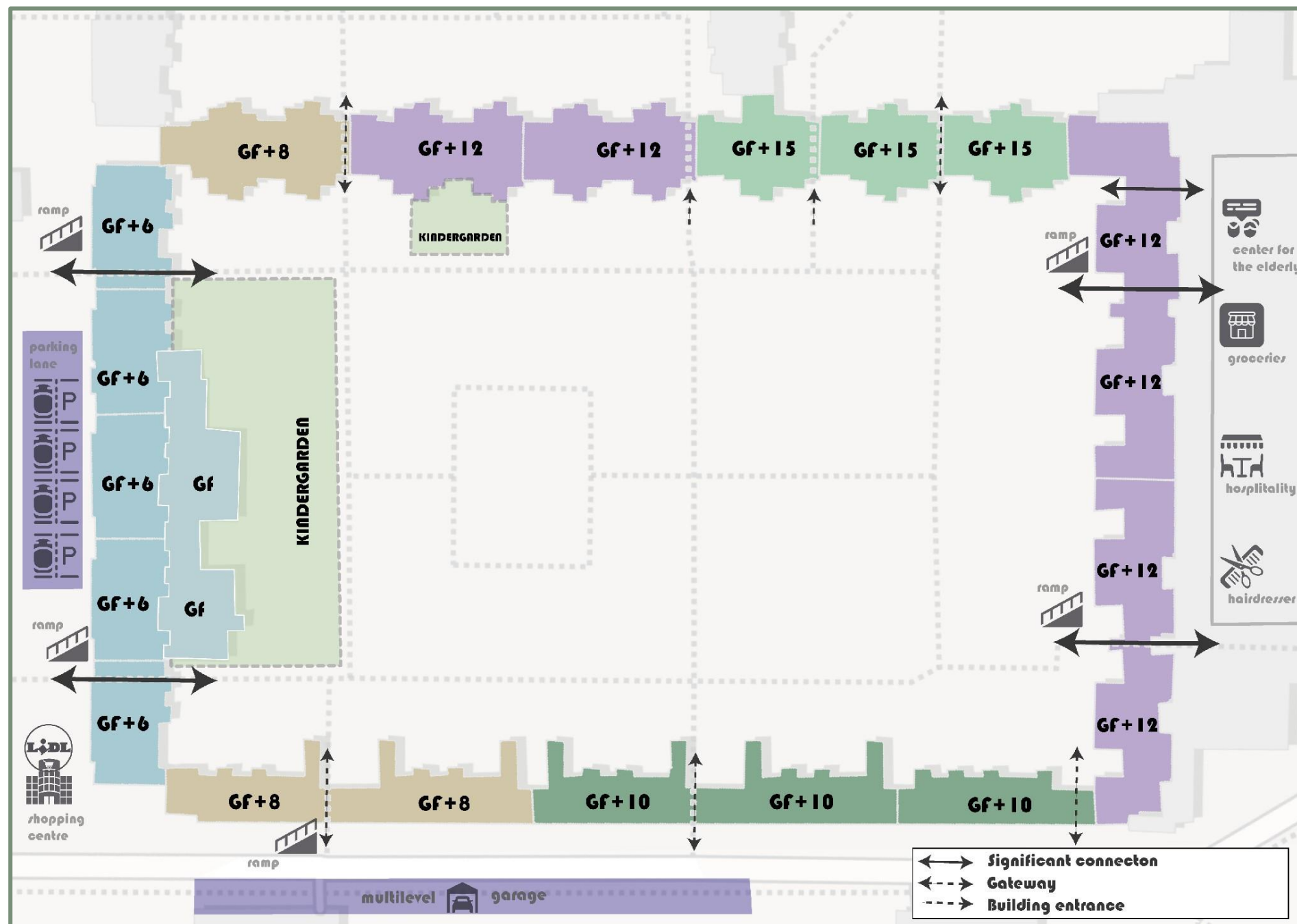
- Interesting feature is the presence of terrain shaping
- There are two-two curved hills, surrounding a fairly enclosed area
- One of the hills is 1.50 m, and the other one is 1.80 m
- The hills are covered with grass, and there are also shrubs and trees, densely scattered on them
- The terrain further enhances one of the main characteristics of the yard, which is its enclosed appearance
- The hills also can be considered of heritage
- There is an additional small (~1.20 m) hill, located in one of the kindergartens, which is likely intended for children to play on





# Surrounding - Building height

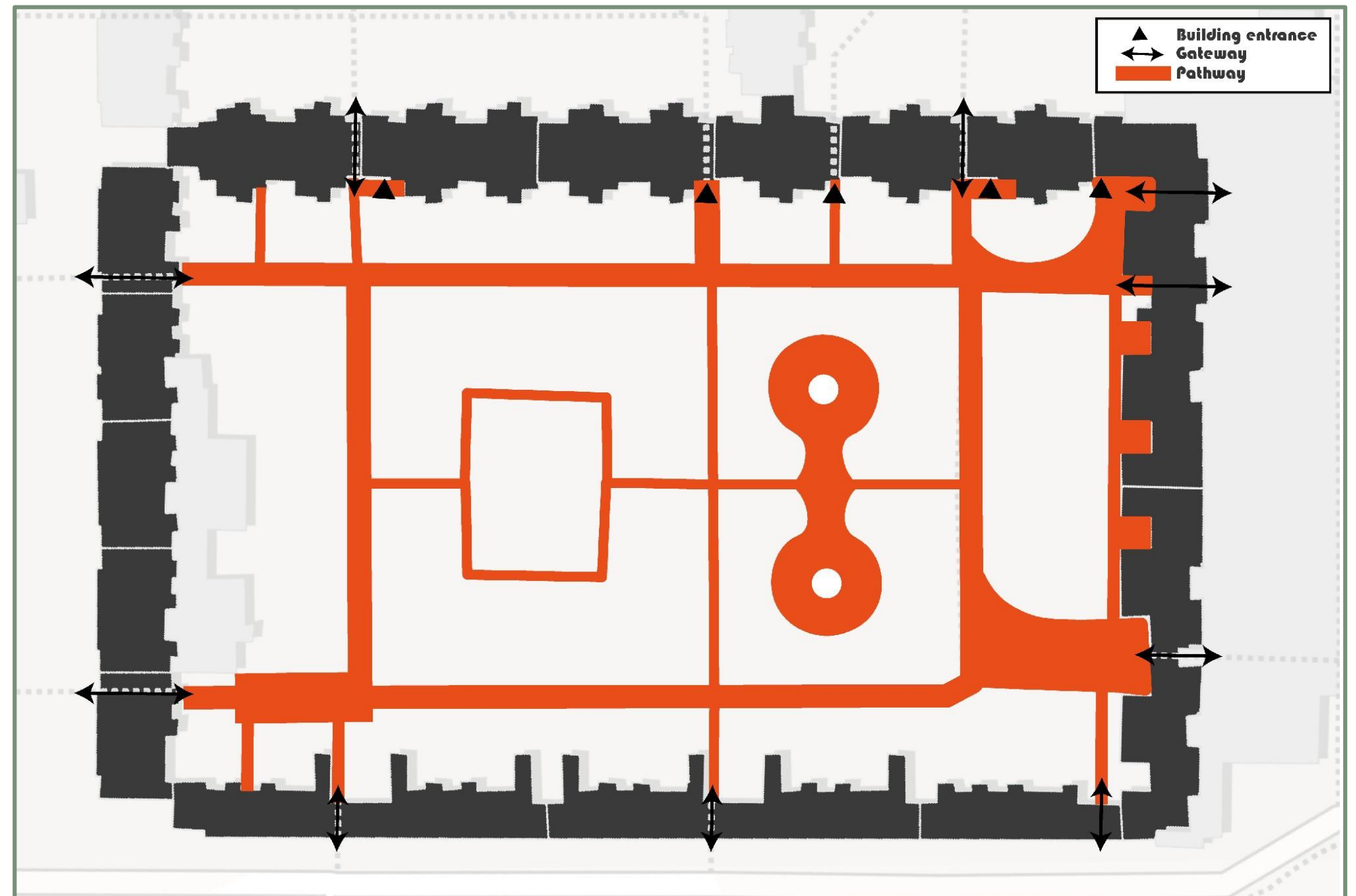
- The height of the buildings decrease from the inside shopping center's side toward the opposite side
- The heights decrease gradually from 13-16 stories to 7-9 stories
- Important connection is on the shorter sides of the building wings, where through the passage of the building, we find convenience store, hairdresser, and restaurant
- On the opposite side, we can access a large shopping center and a parking lane
- The important connection on the side facing the street is the multi-level parking garage, but interestingly, on this side only one gateway has a proper ramp





# Path & entrances

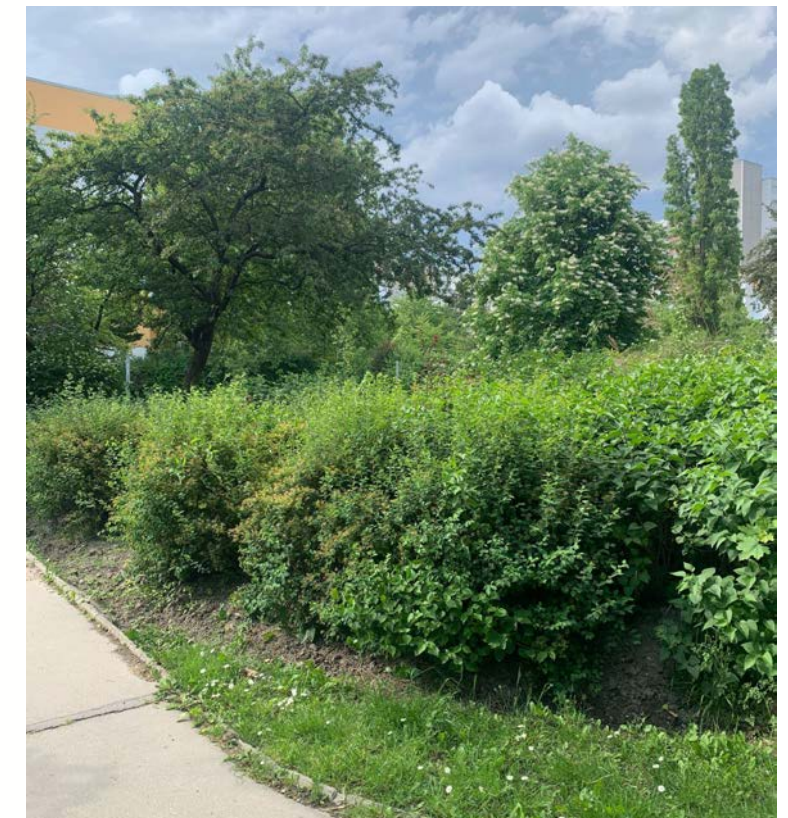
- The surrounding buildings have a total of ten passages, with 2-3 passages per wing.
- The entrances on the side facing the inside of the housing estate indicate that, that is the main facade of the building, and on the opposite side, the back of the building are facing the courtyard
- The pathways are in a straight layout, and they are covered with asphalt and painted asphalt
- There are four more prominent pathways, which run parallel to the edges of the courtyard, giving a rectangular appearance to it. This layout is the same as it was according to the original plans





# Vegetation density

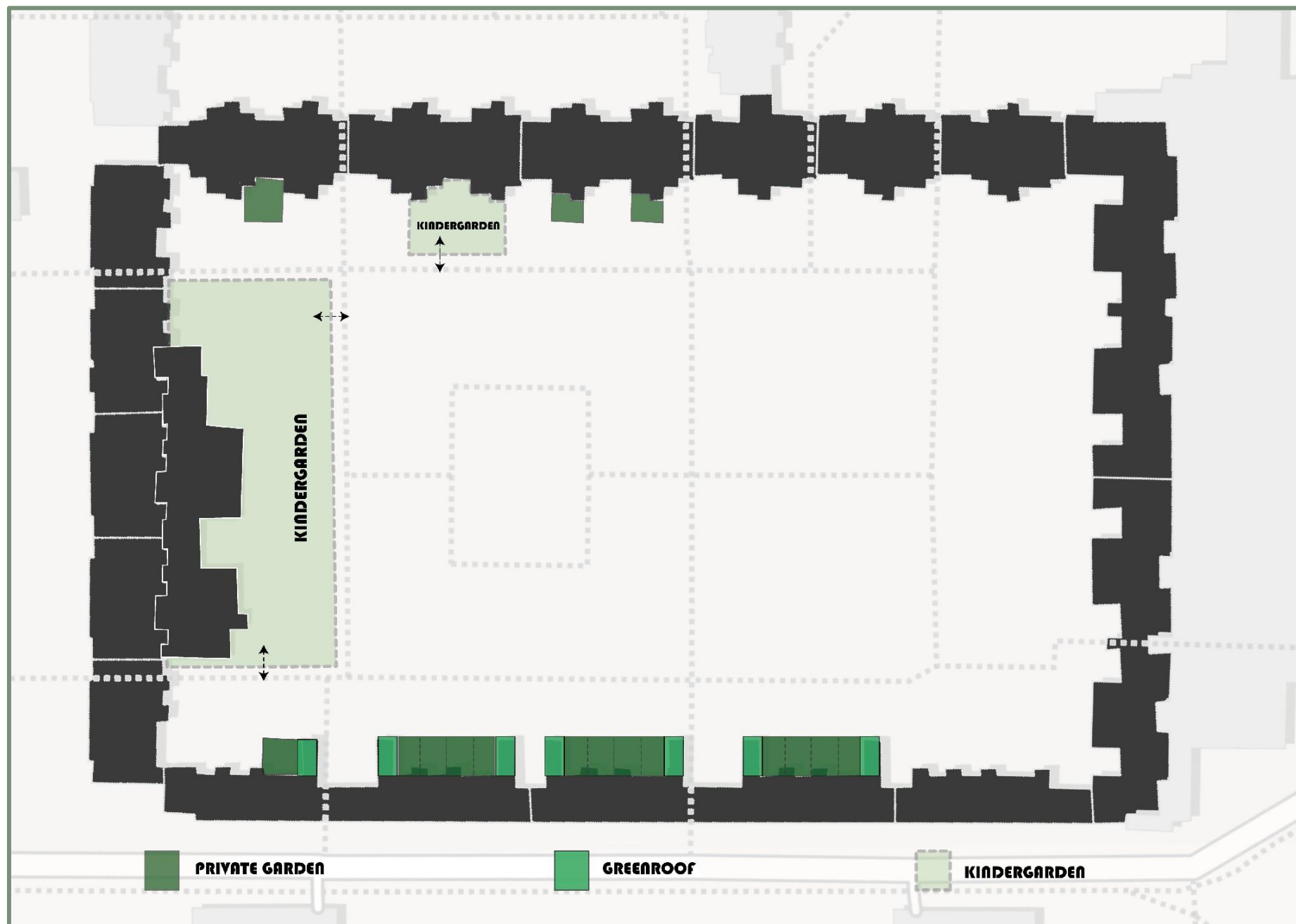
- Very dense canopy coverage, which is one of the area's characteristics
- Advantage: it hides the tall buildings from those in the courtyard
- Disadvantage: it blocks the view of the courtyard for those inside the building
- There are also many dense shrubs in the yard, which greatly reduces the area's transparency.





# Private garden

- Enclosed, small, private gardens, typically located at the bottom of the building wing, which is closer to the street
- There are neatly maintained and regularly used gardens, and there are some quite neglected ones
- The private gardens are fenced in such a way, that their inside can not be seen from outside
- The private gardens have no connection to the courtyard
- There are projecting single-story building sections, with green roofs on top, but these are not accessible to the residents
- There are two kindergartens with their own private gardens, with playground equipment in them. Both of them have gates, so they can be accessed from the courtyard as well.





# Viewpoints

This map represents what we see when standing at different points

## Blue

We can see the roads and hills covered with plants

## Orange

We can see the trees planted in the circle and the spherical statue in the middle of the circle

## Pink

We can see the tall buildings and the main pedestrian route

## Purple

We can see the row of trees and green space that lines the road, and hills

## Green

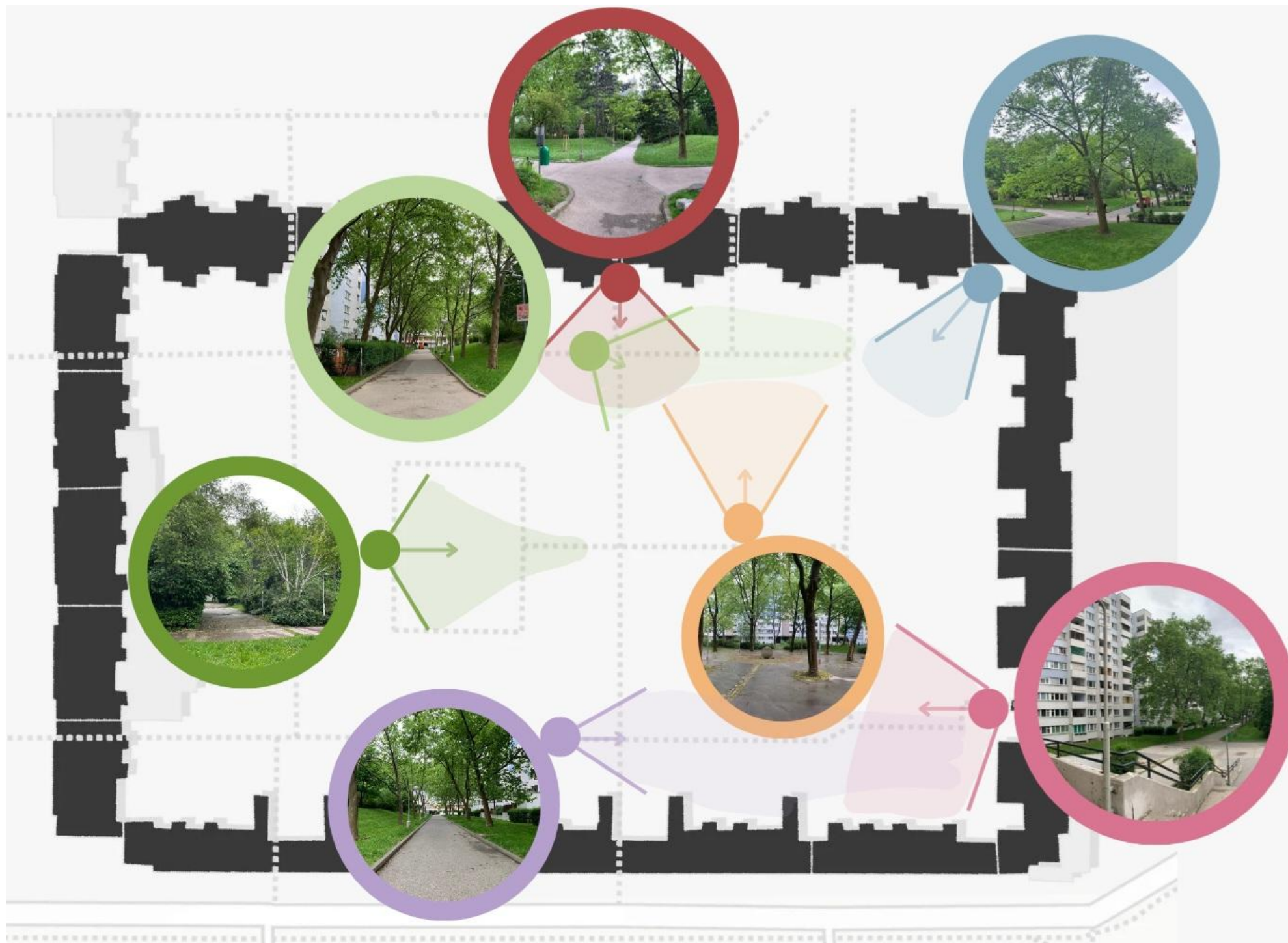
We can see the row of trees and green space that lines the road

## Dark green

We can see the entrance to the square which is surrounded by dense planting

## Red

We can see the junction coming from one of the pathways

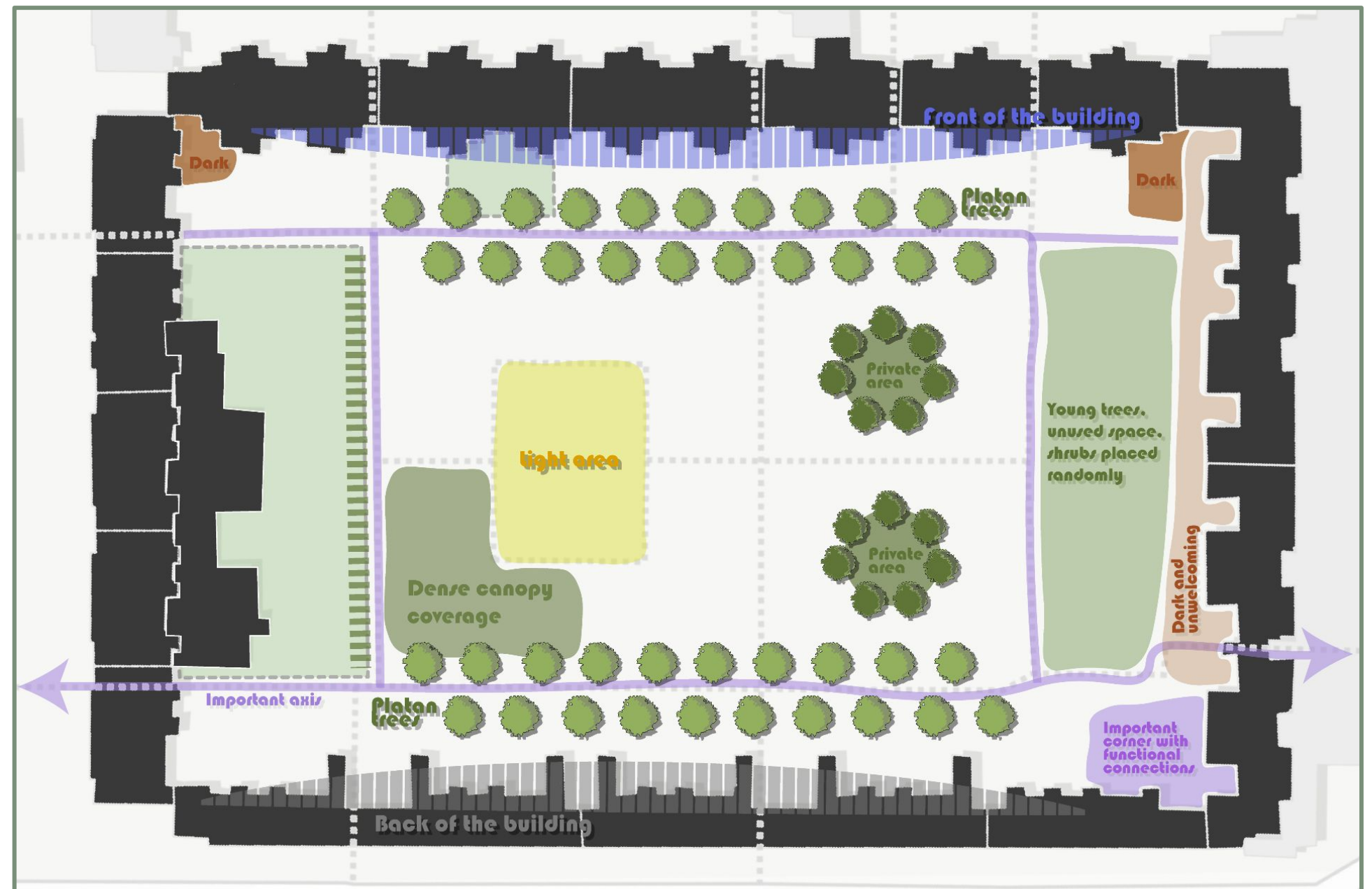




# Characteristics

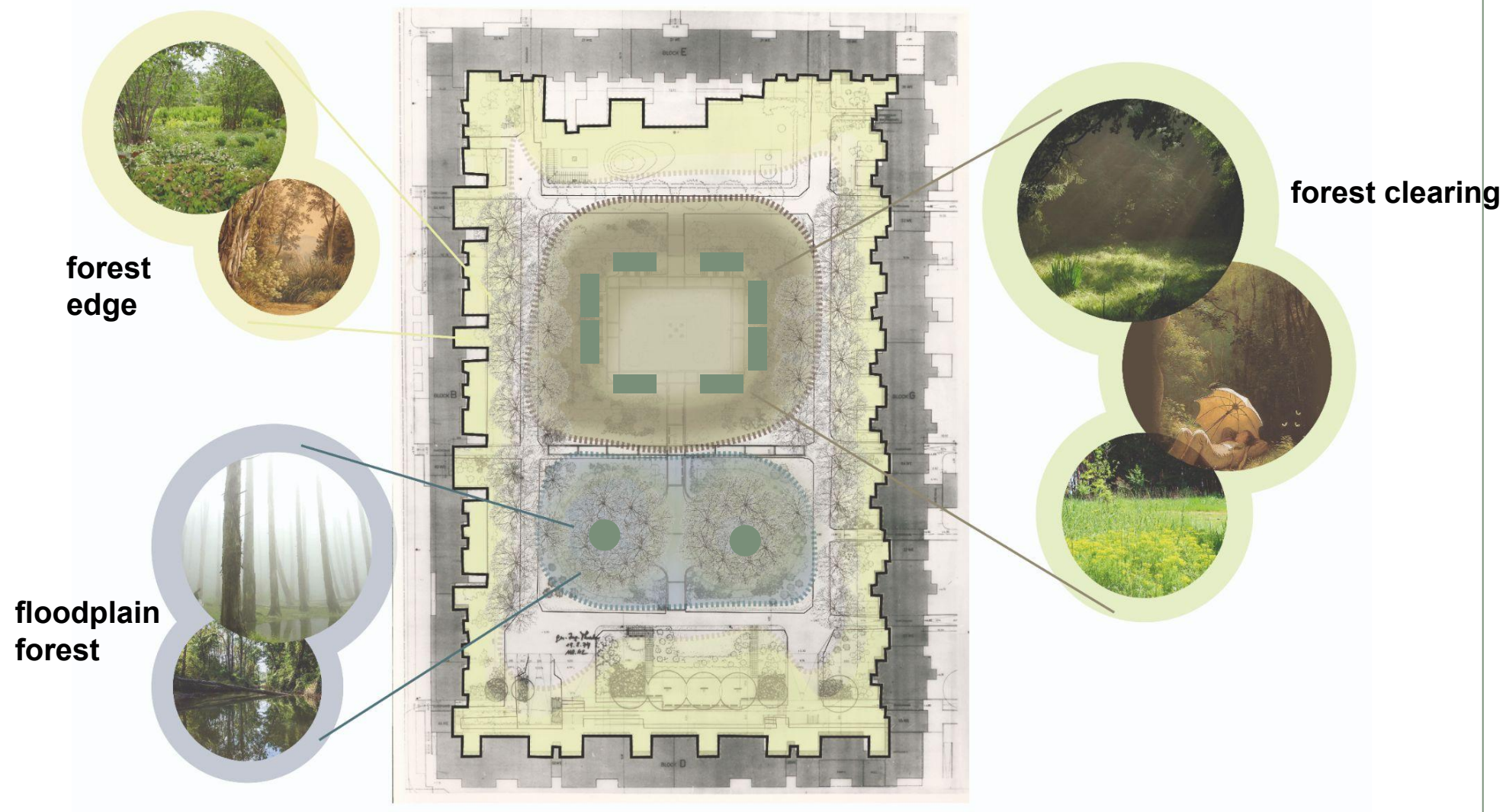


- The corners facing the inner side of the housing estate, as well as the terrace facing the shops, are dark, underused, and unfriendly
- There is an important axis line passing through the area, which is characteristically surrounded by large platan trees
- On the left side of the figure, the rectangular area is sunnier because of the younger trees located here
- The circular area on the right side is a calm, closed, more private space surrounded by platan trees as well





# Zoning concept



The zoning concept is based on the existing atmospheres and aims to enhance them.

## Forest edge

In order to create a stronger connection between the facades and to protect the private gardens, the planting along the main paths is inspired by the typical vegetation structures found on the edges of forests.

## Forest clearing

The square is very intimate and the trees, which block the view of the surrounding buildings, give it a real 'forest' feel. The centre of the square still gets a lot of sunlight, creating the impression of a forest clearing.

## Floodplain forest

The third area feels quite sheltered from the outside, but once inside there is a sense of openness. This openness will be enhanced by reflective water surfaces. The water mist will give this area the feel of a floodplain forest, as well as providing a nice cooling spot on hot summer days.

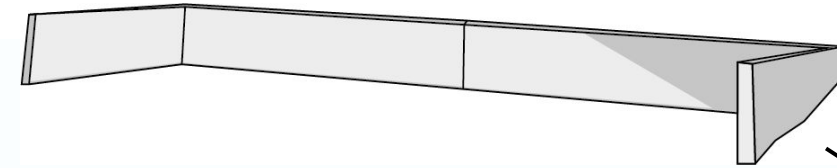
## Preserving history

- Existing structures that are part of the courtyards identity will be implemented in the design concept. The walls that once surrounded sitting areas can be reused as raised beds for growing forest berries. Other themes could include a bird friendly shrub area, or a sandy deadwood bed for insects. The neighbouring kindergartens can be involved in the planning and creating of these niches.
- The spherical fountain will be restored and the water element strengthened by adding fountains in the ground that create water mist.





# Design concept



Forest clearing - discovery zone for kids



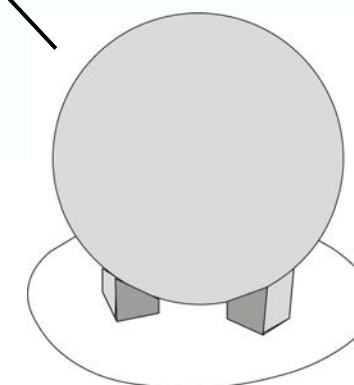
Reusing the retaining walls for forest-themed interventions



Floodplain forest - reigniting the water element



Reflective water element to enhance openness - for quiet contemplation or group gatherings



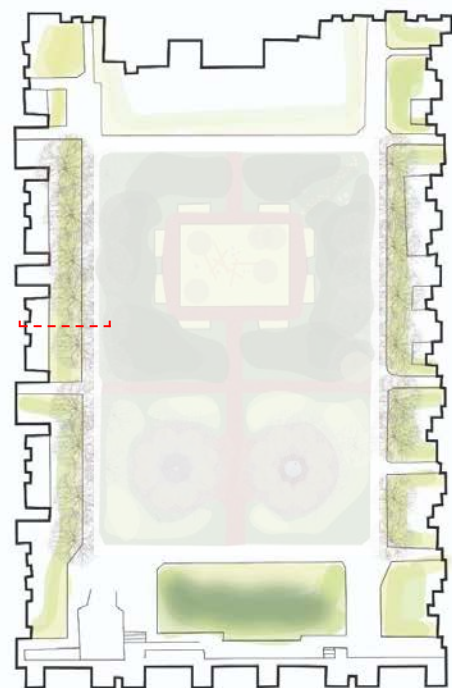


# “Forest-Edge”

Structurally rich layers of vegetation are to be created along the main paths. They are inspired by the natural transition areas between the forest and open spaces - the forest edges.

They are intended to strengthen the path connections and create distance to the private gardens. This will provide much more intimate gardens for the residents.

Perennials and grasses, as well as shrubs, are to replace the lawn under the existing plane trees. On the side where the private gardens are located, the planting should be more extensive. On the side of the building where the numerous entrances are located, the planting can be more decorative.



building

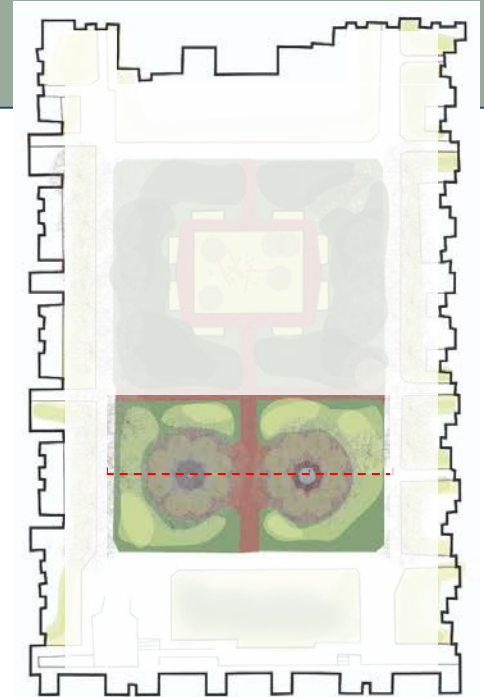
private garden





# “Floodplain-forest”

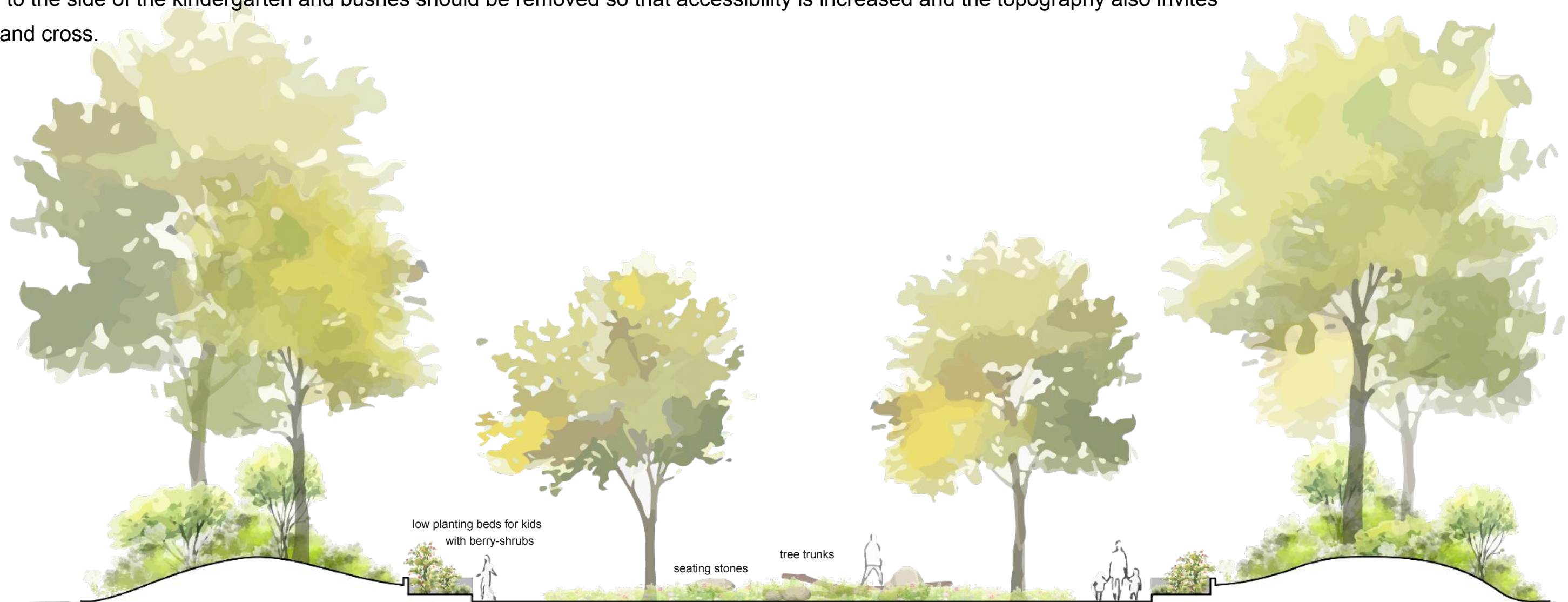
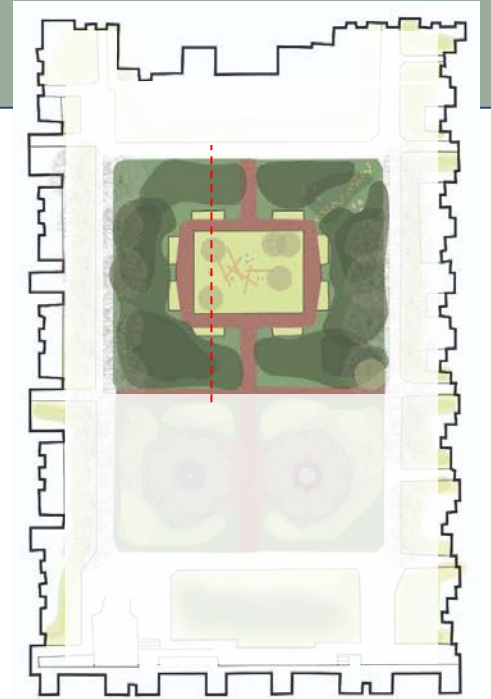
The radially arranged plane trees with spherical elements in the middle already create a place with a very centring effect. The existing canopy of trees, which provides shade in summer, already creates a cooler atmosphere. The element of water has been lost here in the course of time. Water should play an important role again and be reinterpreted for this space. The aim is to create a kind of floodplain forest and generate a more mystical character. On the one hand, the sphere will be retained and supplemented by water jets in the floor that create a mist. On the other side, a calm water surface is to be created in the form of a circle in which the treetops are reflected. The space is framed by low hills. The planting is also based on the floodplain forest, but adapted to the location. It consists mainly of grasses and low-growing perennials. In addition, people should be able to move around the space as freely as possible. Mobile seating furniture should contribute to individual appropriation. Other temporary interventions could also be possible here.





# “Forest-clearing”

The forest clearing is a central element of the forest. The original geometric formal language of the design of the open space is preserved to the extent that the central area provides a certain openness. The wall recesses are also preserved and repurposed. In the historical planning, seating groups were planned in the recesses, as the atmosphere at the edge is much more intimate than in the open area. This is to be loosened up by moving the seating to the open area and giving the recesses a new use. In the style of a forest clearing, tree trunks are integrated as "dead wood" and stones. They offer various seating and play options for different age groups. Half-height flower beds are to be integrated into the small wall niches, which can be planted with forest plants and invite to snack. This space offers the ideal opportunity to act as a connecting element between the two kindergartens. The children can discover the individual elements of the forest and actively plant forest herbs and berry bushes themselves. The hills that frame the space should be cleared to the side of the kindergarten and bushes should be removed so that accessibility is increased and the topography also invites to play and cross.





*Our vision for 2050 is an open, live, but quiet and peaceful courtyard, which is not only a passage to the people's home, but it also offers a place to meet, socialize, rest, and recreate. It is for everyone equally, so its not only an outside playground for children, and it's not only a quiet resting place for the elderly.*

*We would like to make the courtyard more inviting, without losing its current character and atmosphere. This can be done by removing some of the overgrown shrubs and making space for new and more diverse planting - taking inspiration of processes in natural forests. It will make the whole place more transparent and more accessible, while also preserving the original shapes and layouts of the structures.*

*From a forest discovery zone for children with opportunities to harvest forest berries to a more open area, shaded by the plane trees and a place to enjoy different water elements - the courtyard aims to encourage social connection and rekindling with nature.*





# Thank you for your attention!

Anna  
Eszter  
Louise  
Marton

