



# Butterfly garden



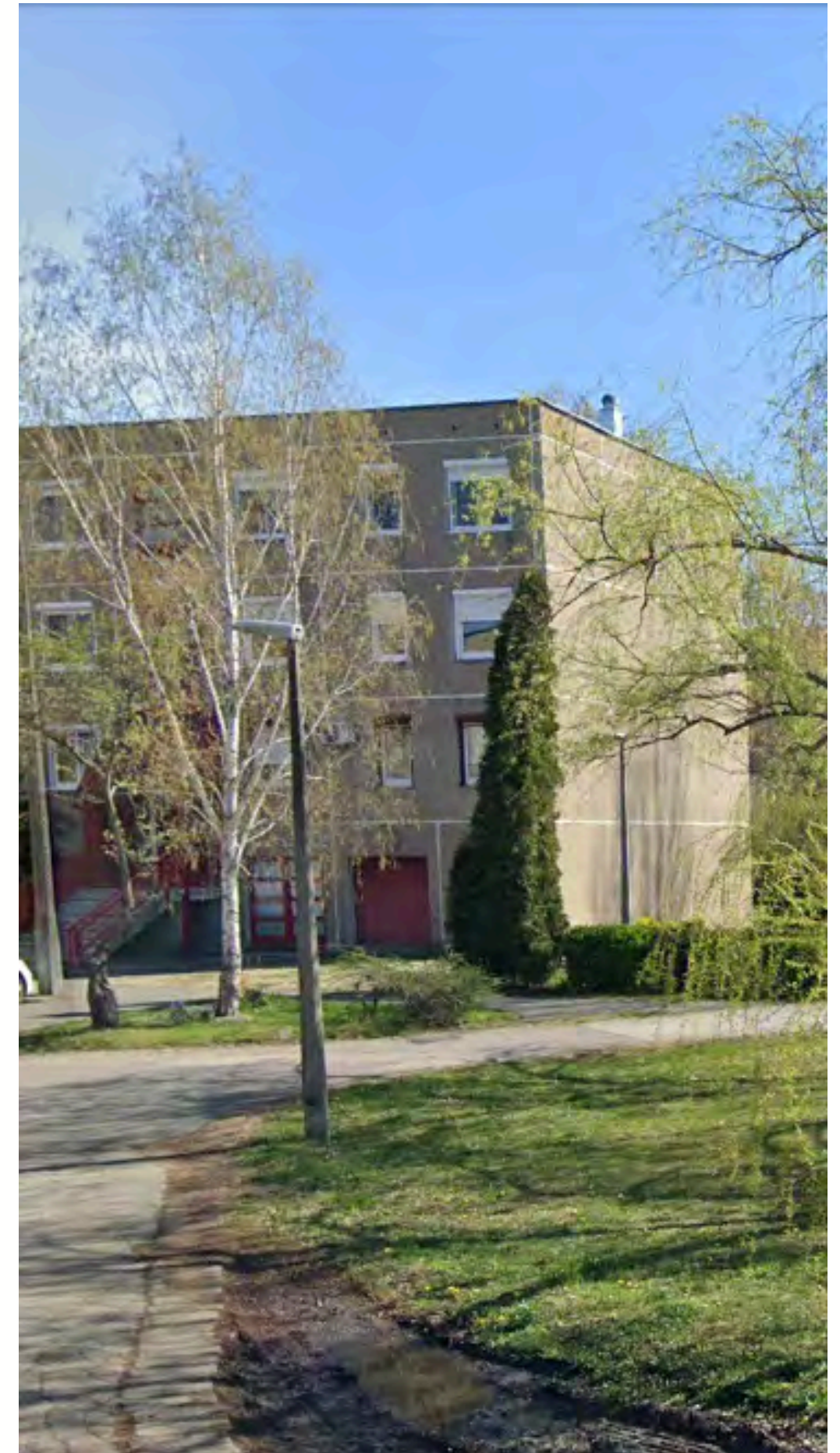


# General introduction

Our courtyard is located on the edge of the housing estate, really close to the family houses with big gardens which have a very different character.

The block has a rectangular shape, and it encloses a very private inner garden.

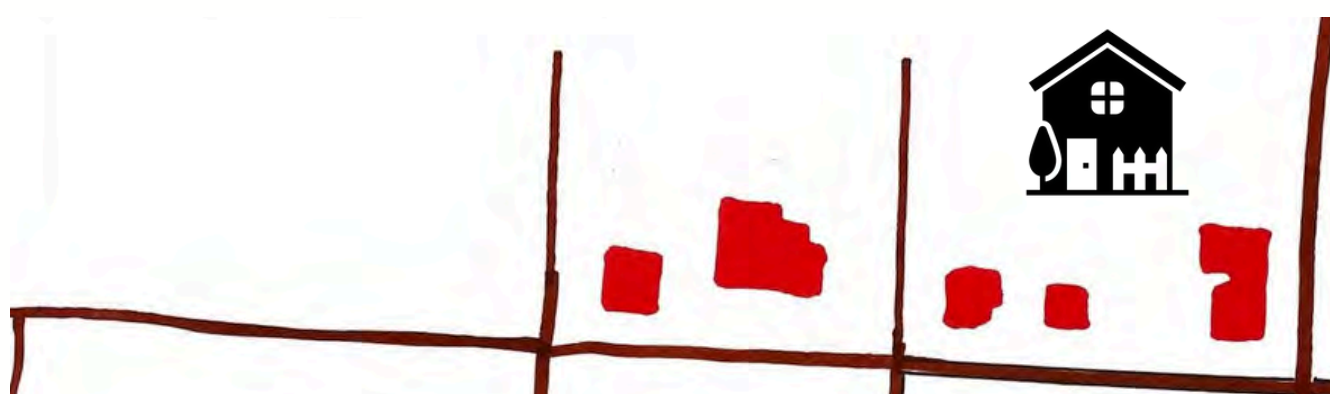
The characteristic aspects, such as green surfaces and appearances of the buildings in our courtyard is similar to other parts of the housing estates.



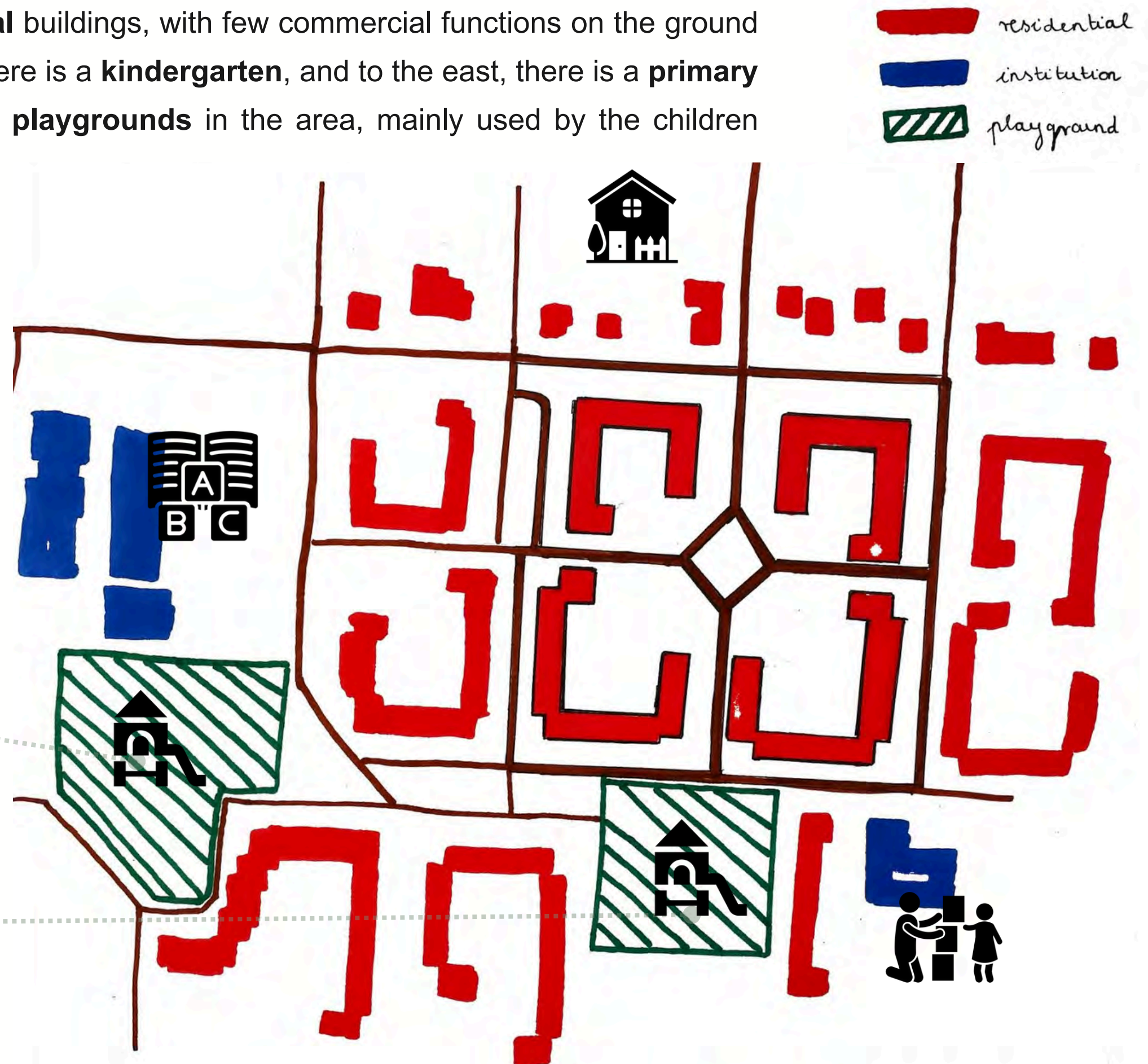


## Surrounding functions

Most of the area is occupied by **residential** buildings, with few commercial functions on the ground floor. On the southern side of our block, there is a **kindergarten**, and to the east, there is a **primary school**. Additionally, there are two larger **playgrounds** in the area, mainly used by the children attending the school and kindergarten. Both playground is **fenced**, and the one next to the primary school is more developed playground with more advanced equipments.

A hand-drawn sketch map illustrating a residential neighborhood. The map features several red rectangles of varying sizes, likely representing individual houses or building footprints. A prominent black silhouette of a house with a chimney and a small garden patch is located towards the right side of the map. Green rectangular areas are interspersed among the buildings, indicating parks or playgrounds. The entire sketch is drawn with simple brown outlines on a white background.

To the north of the block, there is also a residential area, on the other side of Kadosa Street, but this area consists of **single-family homes with private gardens.**





# Parking situation



The dark blue area marks the parking surfaces, which are mainly **located around the buildings**.

There are **parallel and perpendicular parkers** in the area. It can be said about most streets that there are surface parking lots on both sides of the road.

All parking lots can **be used free of charge**, which are mainly **used by residents**, as there are few institutions and services in the area.

Due to high population density, it can often be challenging to find available spaces, especially in the late afternoon and evening hours.



 Parking on the street



PARALLEL



PERPENDICULAR





# Street network

- primary road (cars)
- secondary road (cars)
- pedestrian path

Looking at the area on a larger scale, two different street types can be found. The **primary roads** are marked in red, the **secondary roads** in orange. On these roads, cars can travel and park in the designated parking spaces alongside the road. The pink marks show designated pedestrian paths.



cars were mainly passing from the primary road in the north towards the inner estate and vice versa

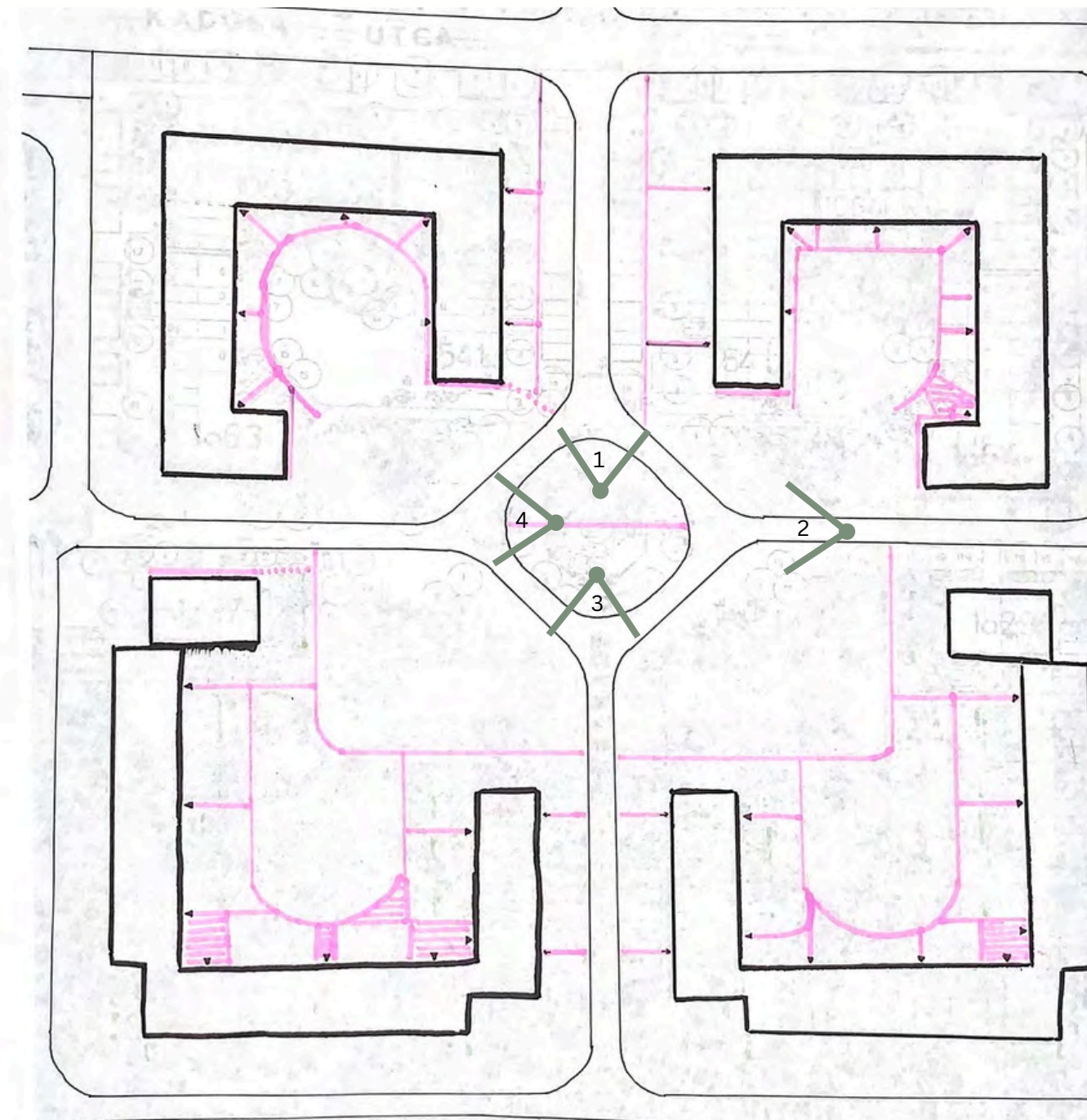


main flow of pedestrians in the area between the east and west



# Pedestrian paths and axis

- footpath
- desire paths
- back door entrances



## AXIS

1



2



3



4



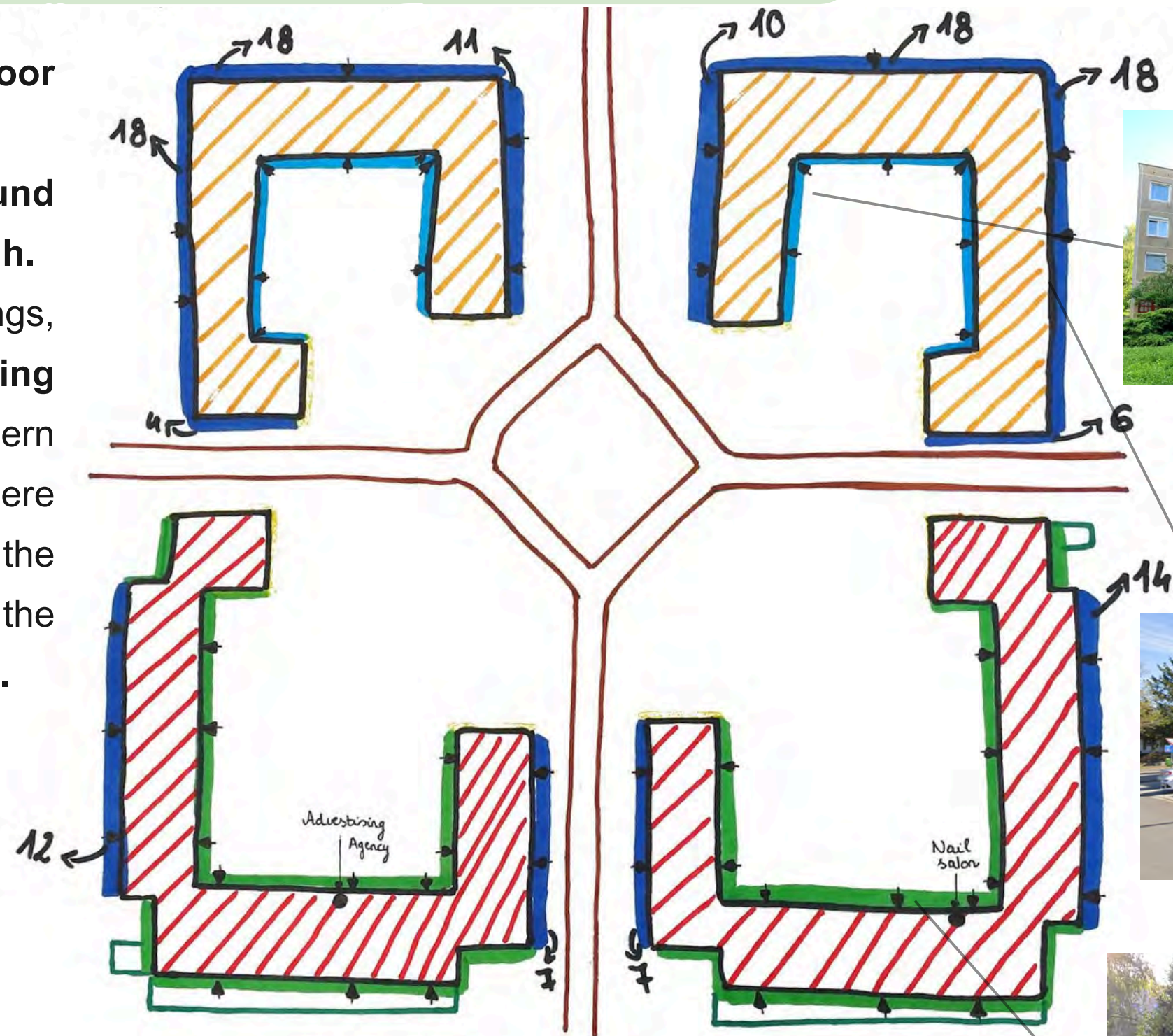




# Building height - ground floor functions


The northern buildings have a **ground floor plus 3 floors** and are **12 meters high**.

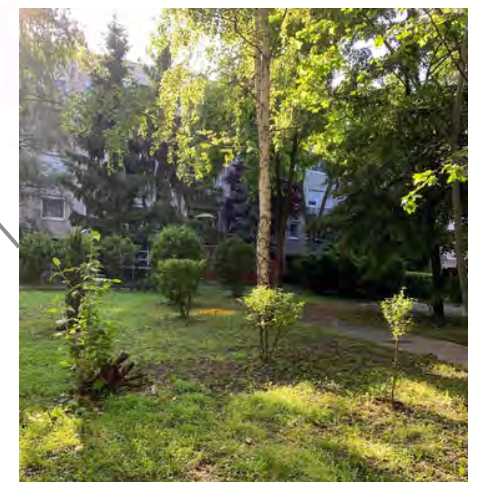
The buildings to the south have a **ground floor plus 4 floors** and are **15 meters high**.

On the street-facing front of the buildings, there are **garages suitable for storing vehicles**. On the facades of the northern buildings facing the inside of the block, there are **private storages**. On the facades of the southern buildings facing the inside of the block, there are **ground floor apartments**.



 Gf+4 ~ 15m  
 Gf+3 ~ 12m

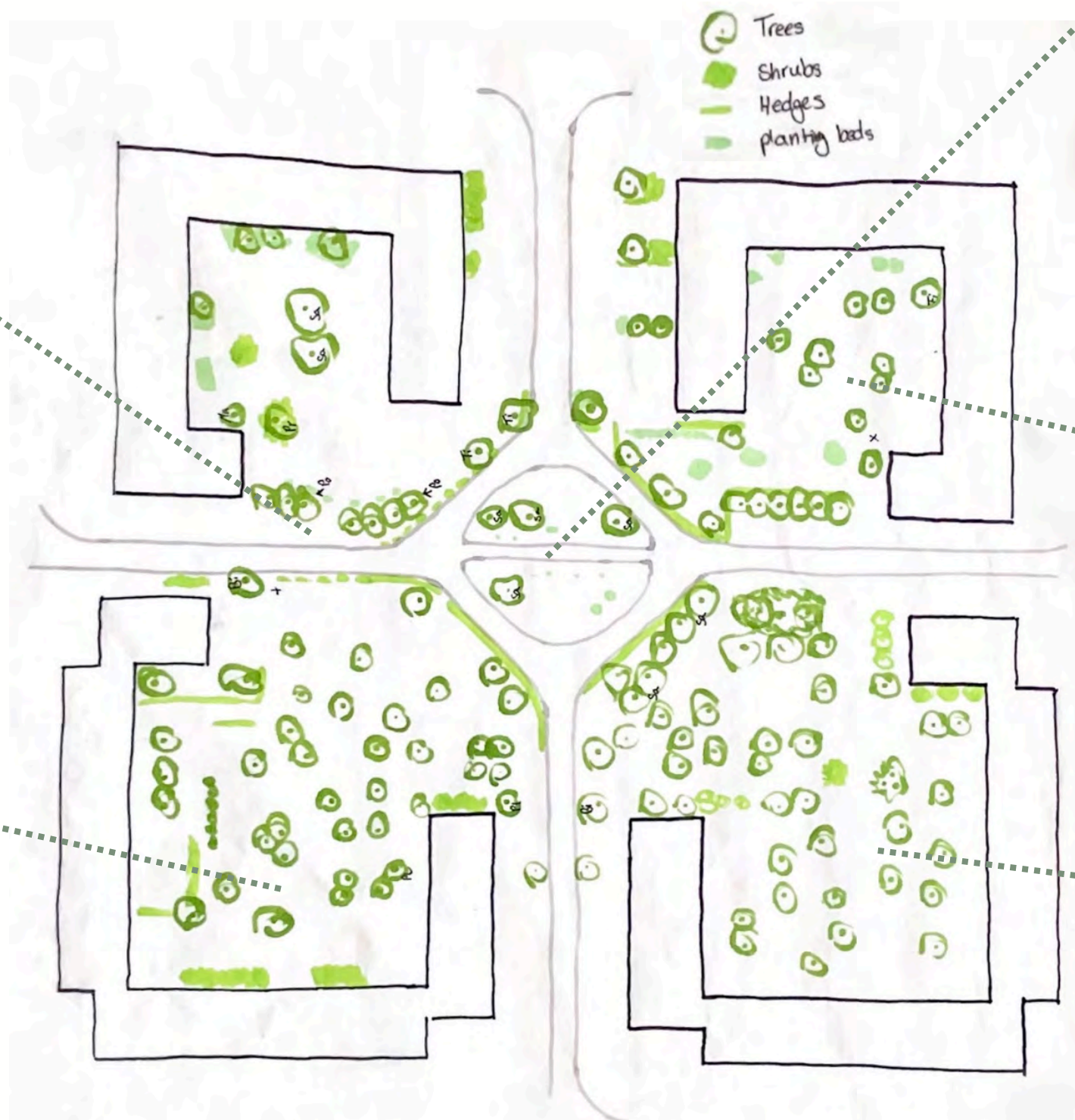
 Garages for cars  
 Storage  
 Ground floor apartments  
 Firewall





# Vegetation - density

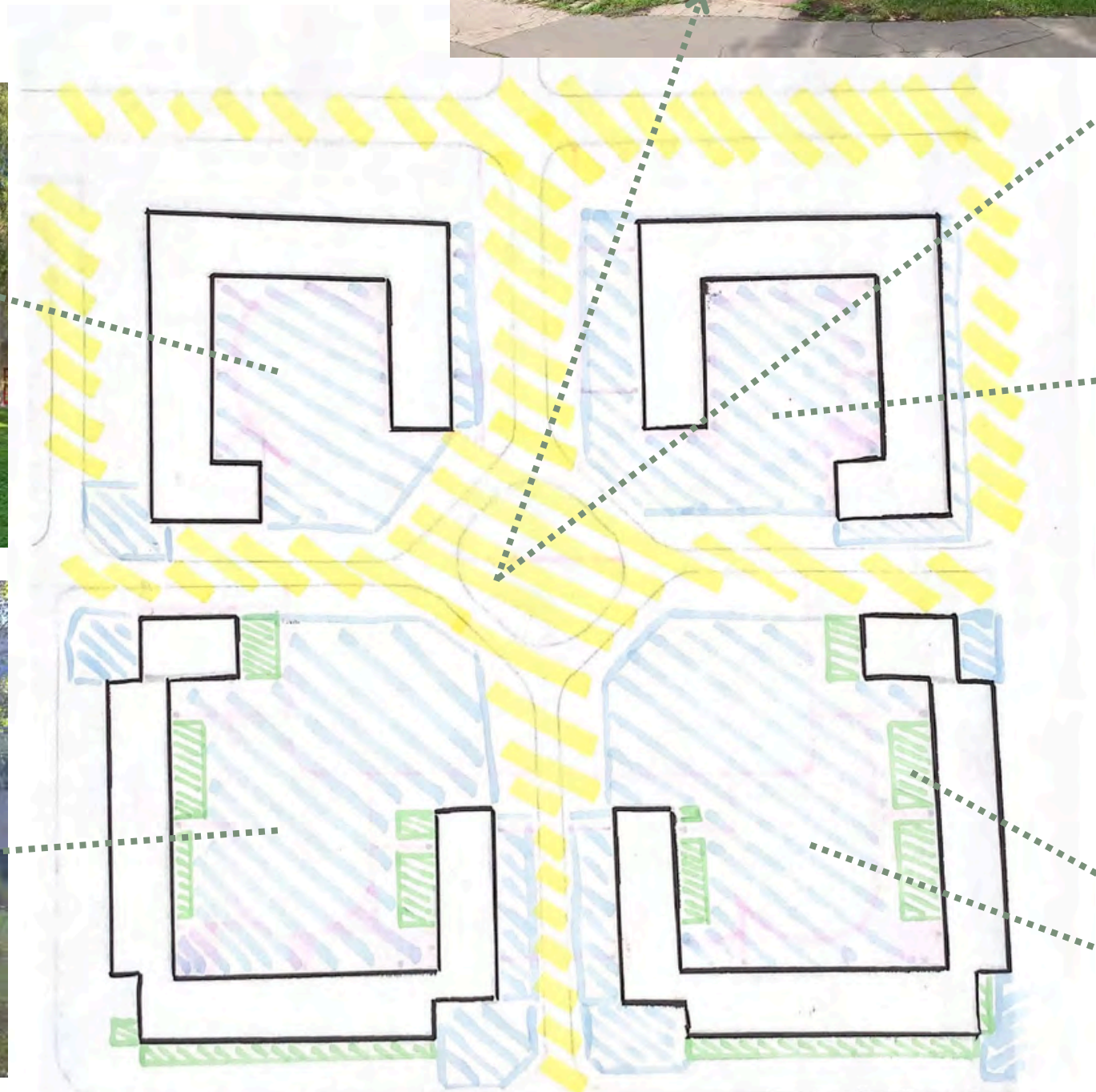
The existing vegetation cannot be traced back to the original planning. Only a few older existing trees can be identified, especially the willow-trees in the centre and the populus-trees. The hedges and shrubs were planted later for separation. They may serve to create more privacy within the small courtyards and prevent cars from parking. In the southern courtyards, the tree crowns form a denser canopy than in the northern courtyards.





# Private - semiprivate - public

- private gardens
- semi-private
- public

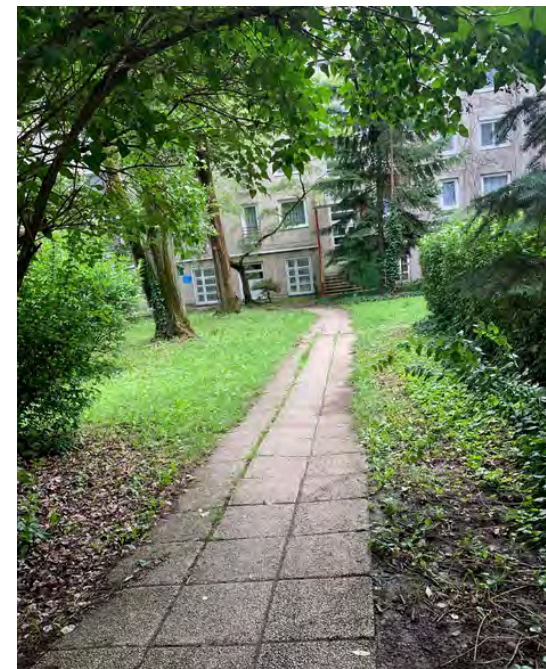
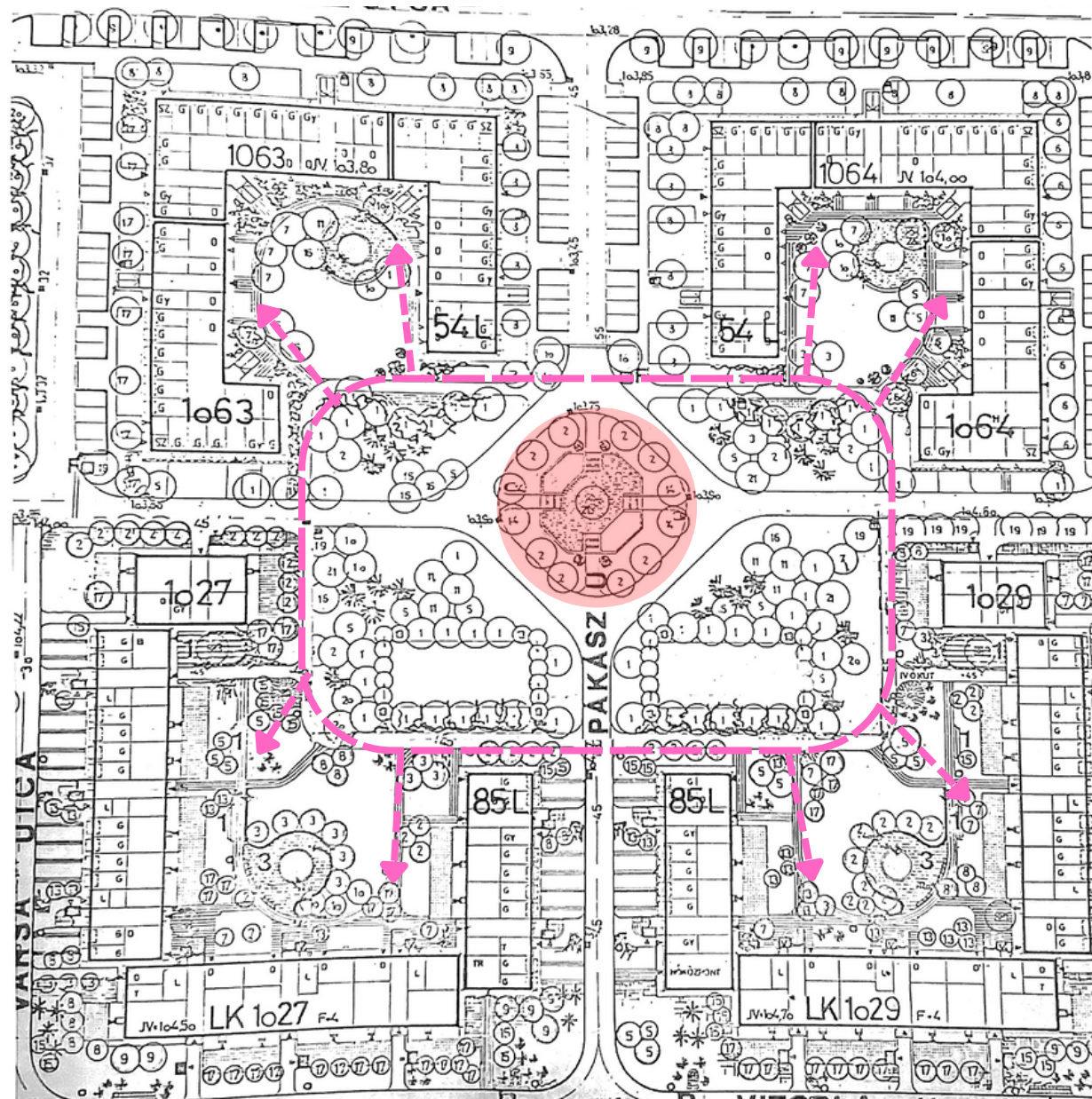




# Historics - values

Most of the **original design** was either removed or more likely **never executed**. The only **remnants** of the original plan are some of the **pathways**, which lead through the courtyards to enter the back of the buildings - in some cases they also lead to **dead ends**, as the original pathway system is not intact anymore.

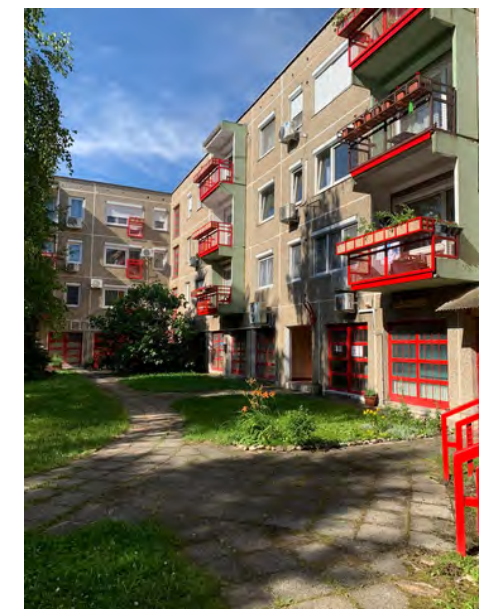
The historical plan also intended to put playgrounds in the courtyards, today no specific functions are intended for the place. A **value** we want to build upon in our design, is the **center of the courtyard**. By strengthening the center and making it a **focal point** of the area it will be more attractive to the residents. Our concept also **reflects** and **revives the planned pathway system** in order to improve the access to the courtyards.



original pathway and dead ends

prominent color

The color red is a distinct feature of the housing blocks and will be picked up in the concept

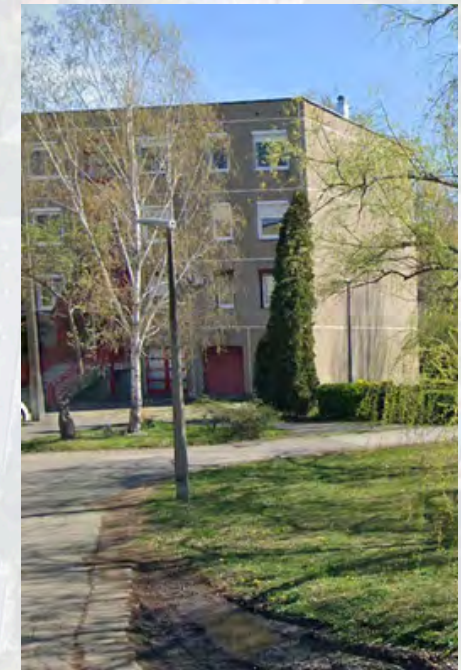




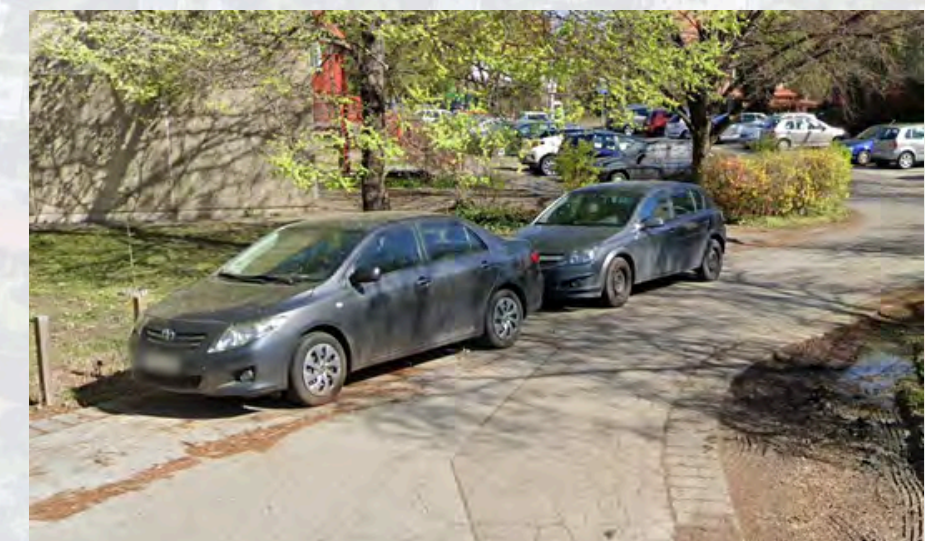
# Comparison to the similar block



- pitched roof
- dense canopy coverage
- **inside blocked from car traffic**
- buildings closer to each other



- initiative flower planting by residents
- opened for traffic
- less dense canopy coverage





BUTTERFLY



GARDEN



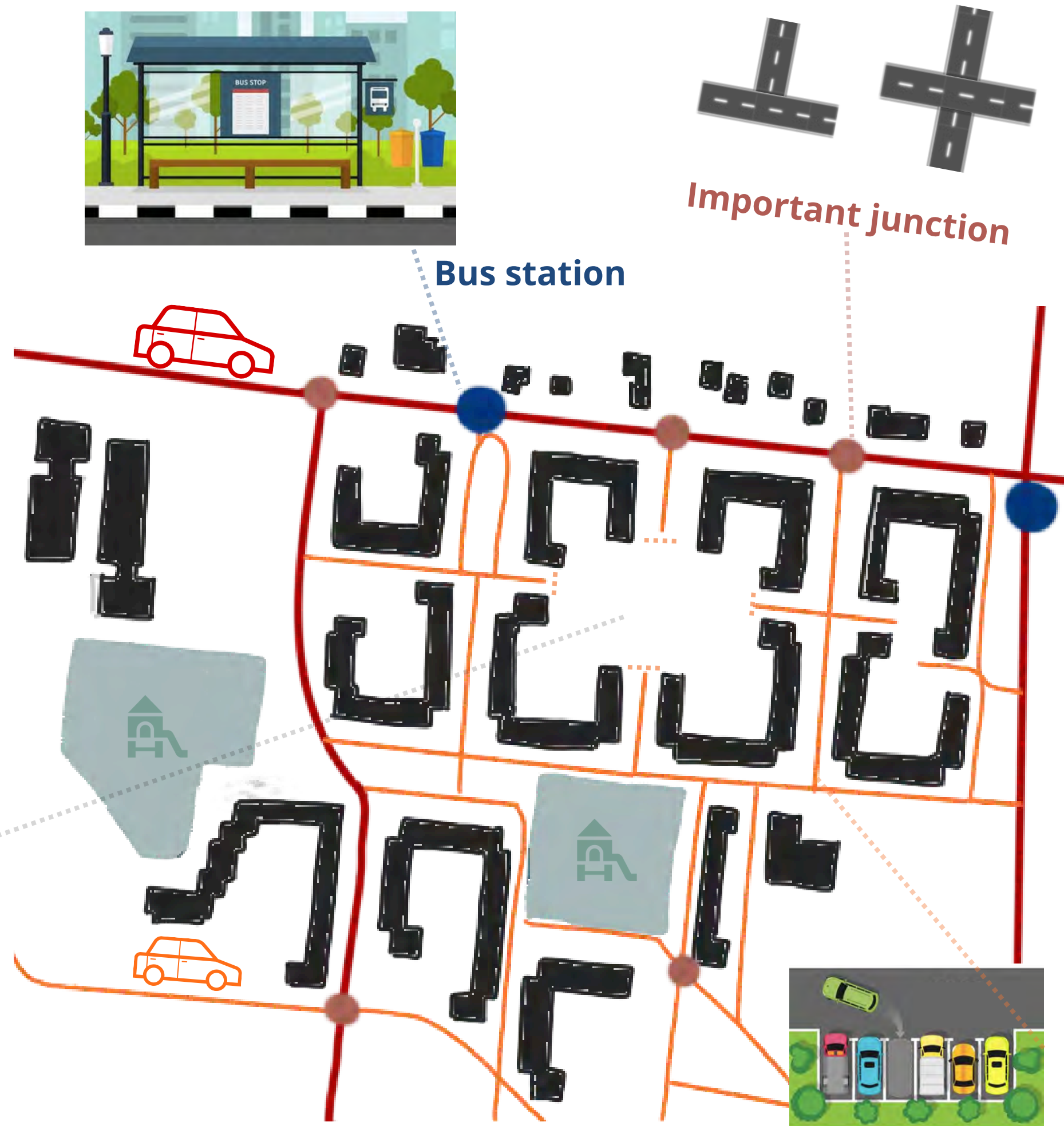
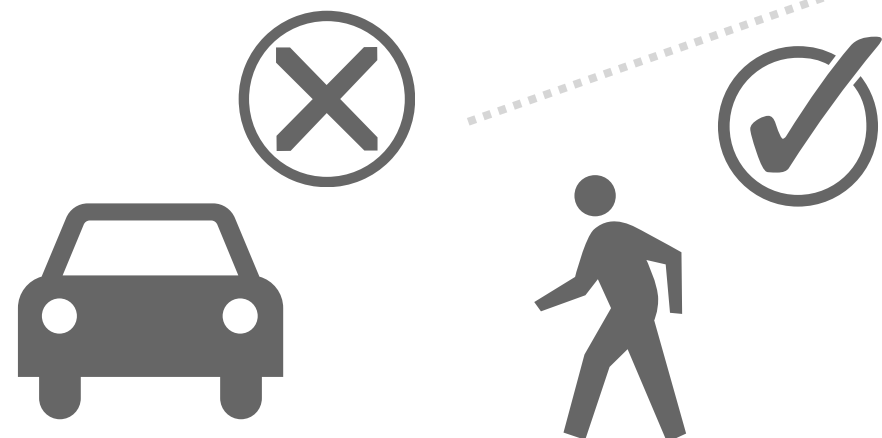
# Road system



Looking at the area on a larger scale, two different street types can be found. The **primary roads** are marked in red, the **secondary roads** in orange. On these roads, cars can travel and park in the **designated parking spaces** alongside the road.

Contrary to today's street system, we would ban car traffic from the center of the block and leave it open for pedestrians. At the end of the entrance streets, aligned with the building edges we would place **barriers** to prevent cars from entering the central area.

Near the block, there are **bus stops** for the local bus, which provides residents with transportation to the city center of Budapest.





# Colorful Connection

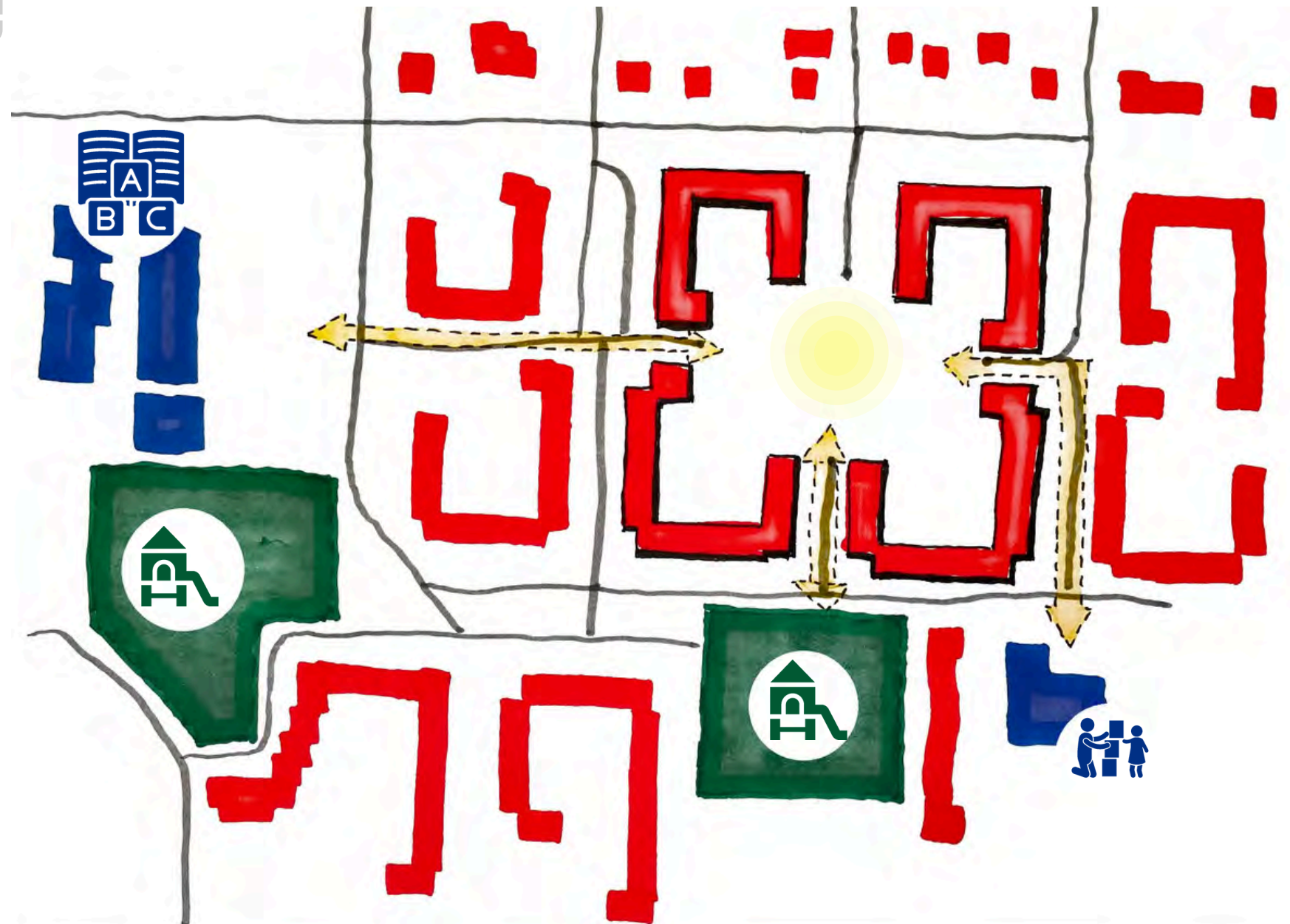
Near the residential block, there is an **elementary school**, a **kindergarten**, and **two playgrounds**.

We would like to **strengthen the connection** between the residential block and these facilities.

It would appear as a visual connection with **colorful paintings on the surface of the asphalt**.



We would like to invite the children to come to the courtyard, explore the flower beds, learn the names of the flowers, and get to know them.



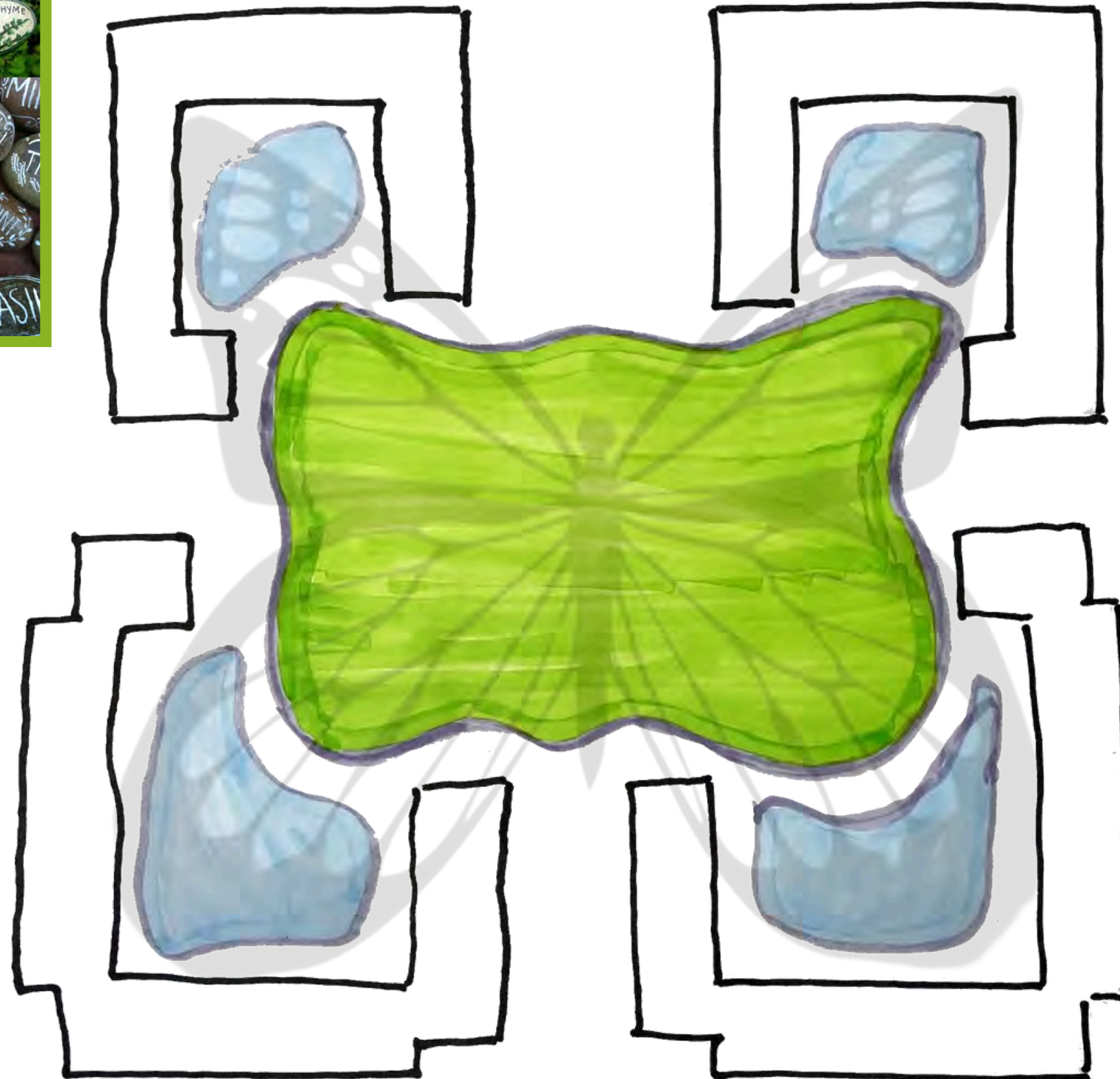


# Zoning concept



PUBLIC - SOCIALIZING - EDUCATIONAL - DECORATIVE

PRIVATE - CALM - CLOSED - INTIMATE



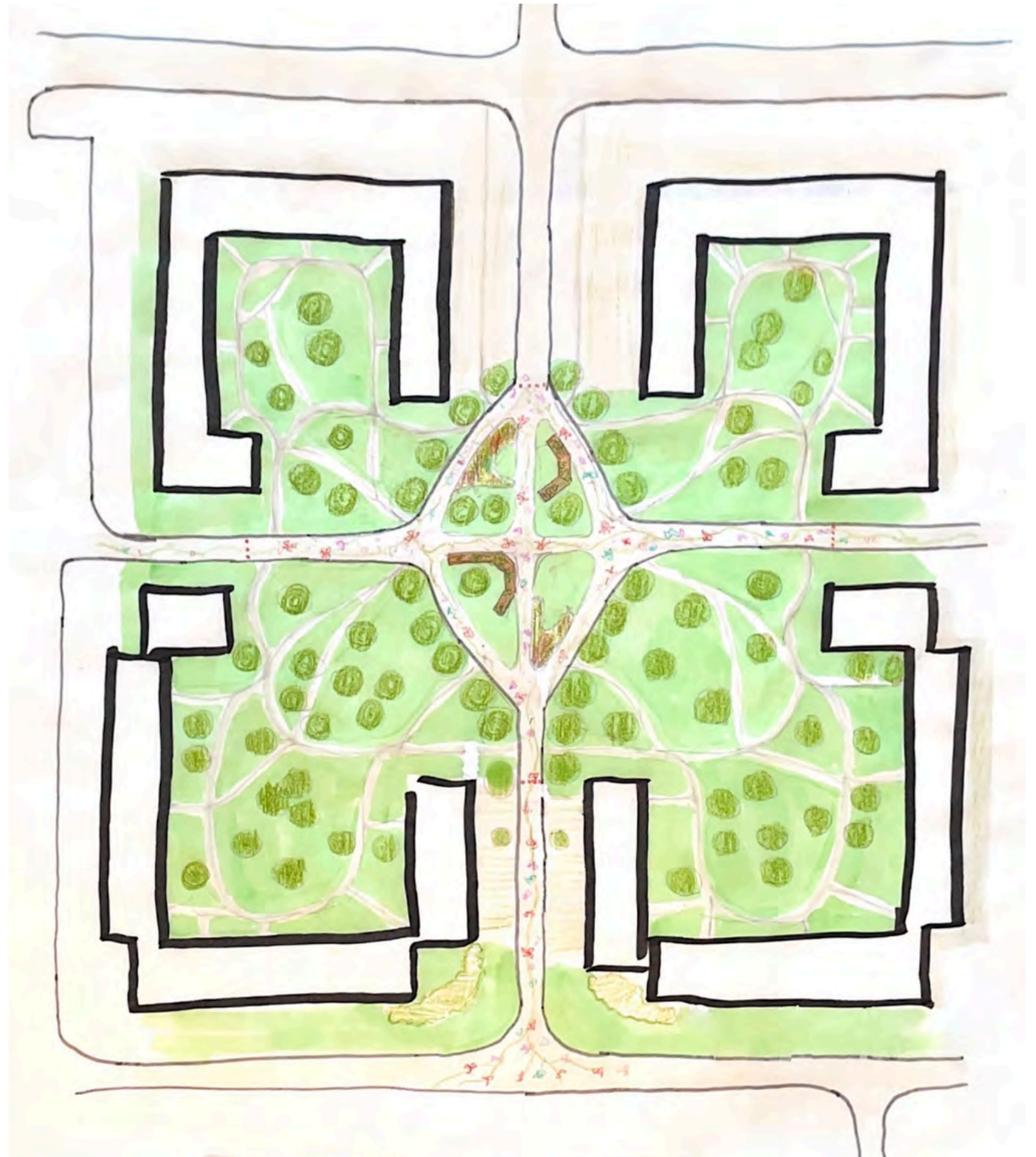


# Design concept

The **body of the butterfly** forms the **centre of the housing blocks**, where the individual courtyards meet. The **centre** is therefore the key element of the concept, as it **connects the inner courtyards** and also creates a link to the surrounding . **Like a butterfly**, the **residents** should be able to **unfold freely**. This is achieved by making the block a **car-free zone**. In addition, residents and children will have the opportunity to appropriate the open space and **plant their own perennials, annuals or vegetables**.

The northern buildings have striking **red colour** accents. This is also to be **reflected** in the middle of the block and supplemented with other colours to create a **colourful neighbourhood** (just like a butterfly).

The northern houses have no access to private gardens, but the residents have already created DIY-plantingbeds and benches. For this reason, **more opportunities to linger, socialize and garden** are to be offered.





# The inner center







***Our vision for 2050*** the area known as the Butterfly Garden has become a popular place for children, where they enjoy spending their free time and learn about plants through playful experiences. And also a popular place among adults, where they can actively relax, unwind, plant, and take care of their flowers.

Children arriving from school, kindergarten, and playgrounds by following colourful pavement markings are greeted by flower beds with flowers and herbs labeled with small signs for educational purposes. Children can touch and smell the plants, allowing them to learn the names of flowers and herbs.

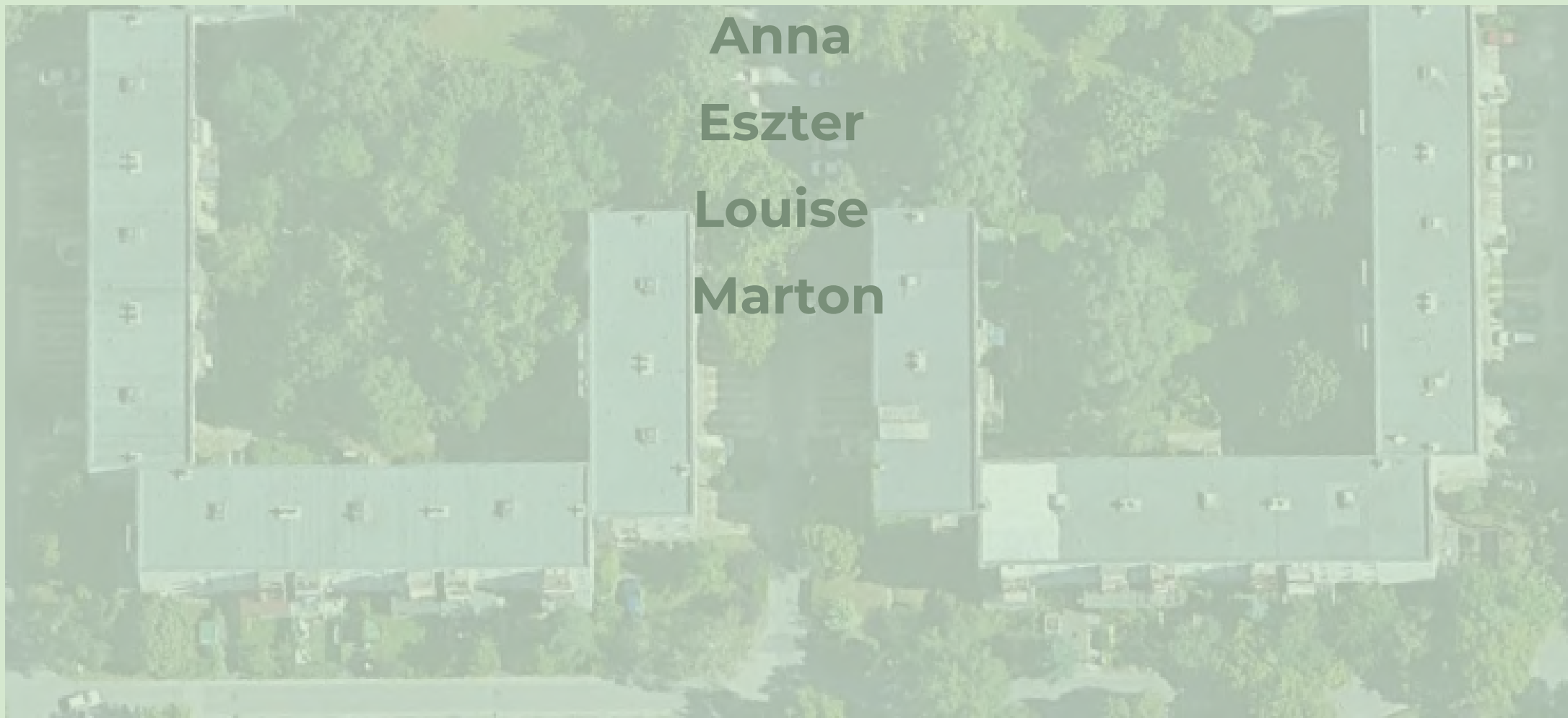
Red is the dominant color in the courtyard, the entrance to several buildings is red, and red appears again in the street paintings. The wild grape growing on the bare walls of the buildings offers a cohesive and attractive border to the center and will shine in a strong red colour in the autumn months.

Local residents can relax in quieter, more private community gardens where seating furniture provides comfort.





**Thank you for your  
attention!**



**Anna  
Eszter  
Louise  
Marton**