

A photograph of a residential building complex with a green lawn in the foreground and a cloudy sky. The buildings are multi-story, with white facades and colorful accents in red, green, and orange. A large, tall tree is on the left side of the image.

Blooming community at Rennbahnwegsiedlung

Anna Kalwoda 11707193 | Roman Gattermann 12003432 |

Kőházi Balázs GVD24J | Jánosi Zita C4G3PR

Floor plan nowadays courtyard 5

Different colorful plants should create a pleasant scenery for visitors. Pergolas and the plants growing on them provide shade and a statue inside a well provides cooling. The plants are chosen by the color of their flowers and leaves and the time of their blooming.



source: own visualization

Section

Apart from the modelled areas of the largest green space, the landscape has hardly any gradient. The section clearly shows that areas with many trees and shade alternate with large, sunny green spaces.



source: own visualization A'

Heritage

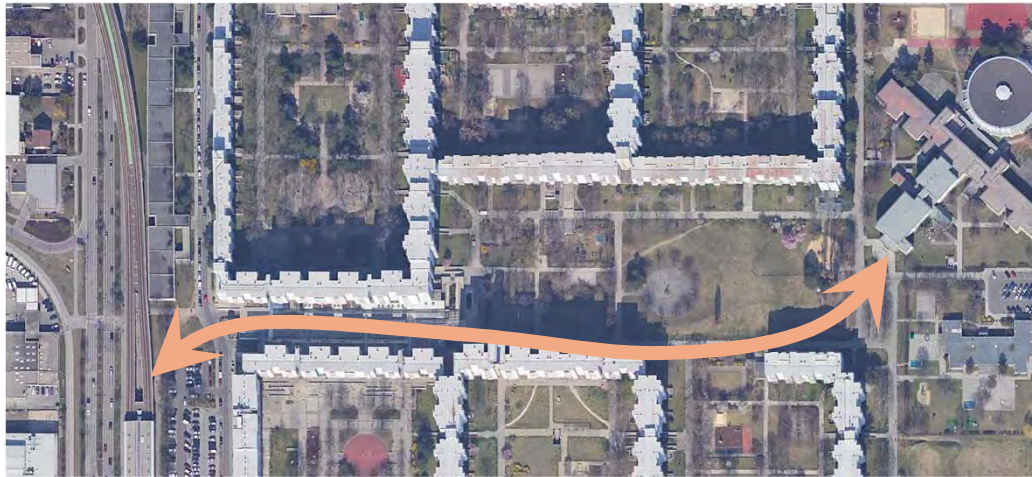
- Statues
- Landscape
- Ring of trees
- Road layout
- Benches



Josef Schagerl, 1973



Hans Muhr, 1978



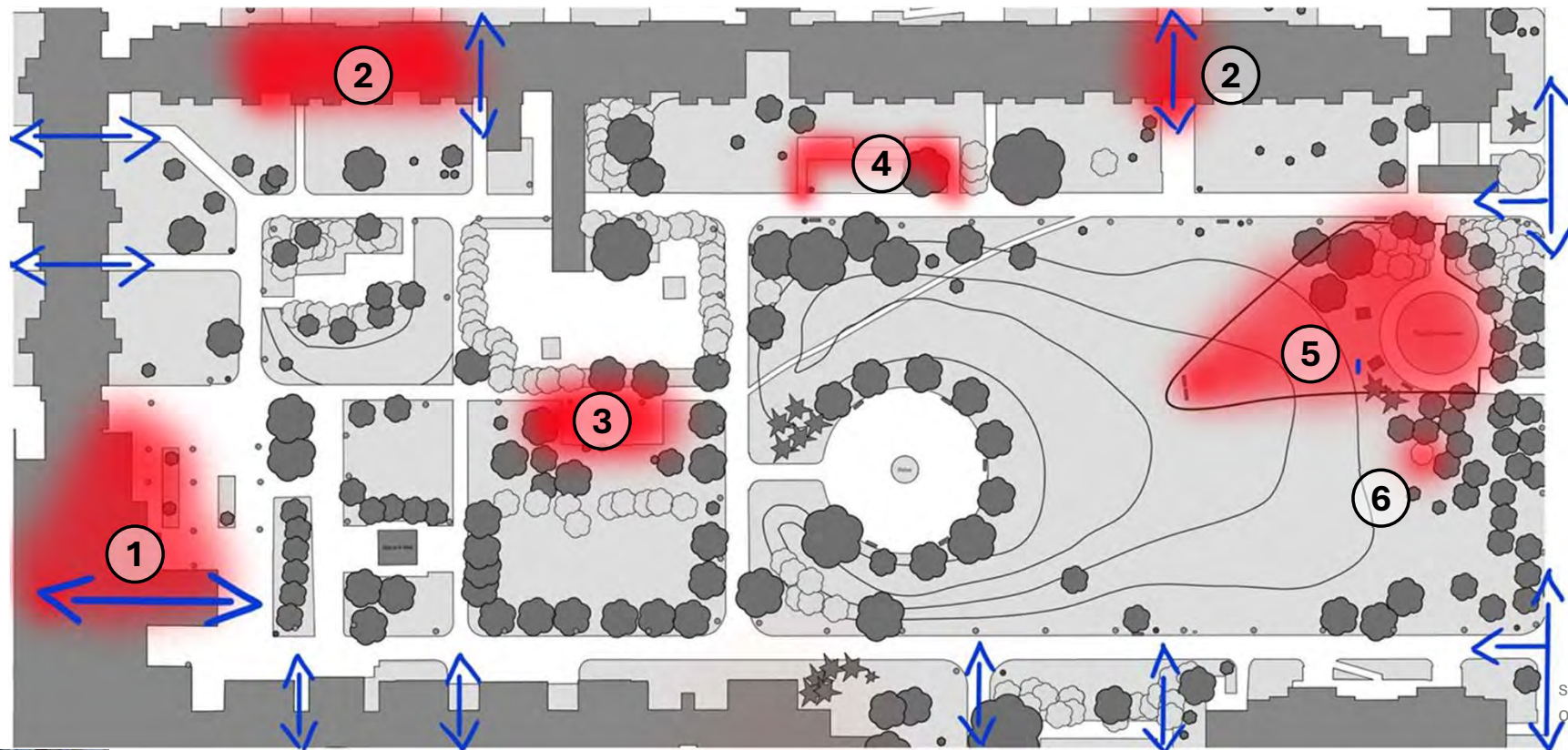
source: own foto; google.com/maps own visualization

Analysis on values



source: own visualization

Analysis of problems



source: own visualization;
own fotos



Analysis of site

Values

- Areas with potential (violet): As there are many spots without any/with a shortage of use, we tried to improve and give new life to those areas
- Positive areas (green): The main open meadow isn't enclosed like the others and therefore gives it`s visitors a feeling of vastness. It is also the only modeled surface that breaks up the otherwise very dominant grid of paths.

Problems

- 1: crossing quickly isn't possible and affords many steps up and down
- 2: the connection to the yards 7 and 6 are interrupted by a height difference
- 3: the sports field was abandoned and now there is only a sealed area without seating possibilities
- 4: a path without any clear usages or benches
- 5: neither the slope nor the benches on top of it are being accepted by the people using the playground
- 6: the pavilion is very dirty and is missing a table on which people could eat on or where children could do their homework

Connections to the outside

Yard 5 is open to two sides, one opening to the east and one opening to the south:

East

- Opening to a school building and pedestrian area, but not visible from the top of the slope because of many trees, feeling of vastness

South

- Connection to courtyard 4
- natural border through trees and bushes
- Visible skyline
- feeling of vastness



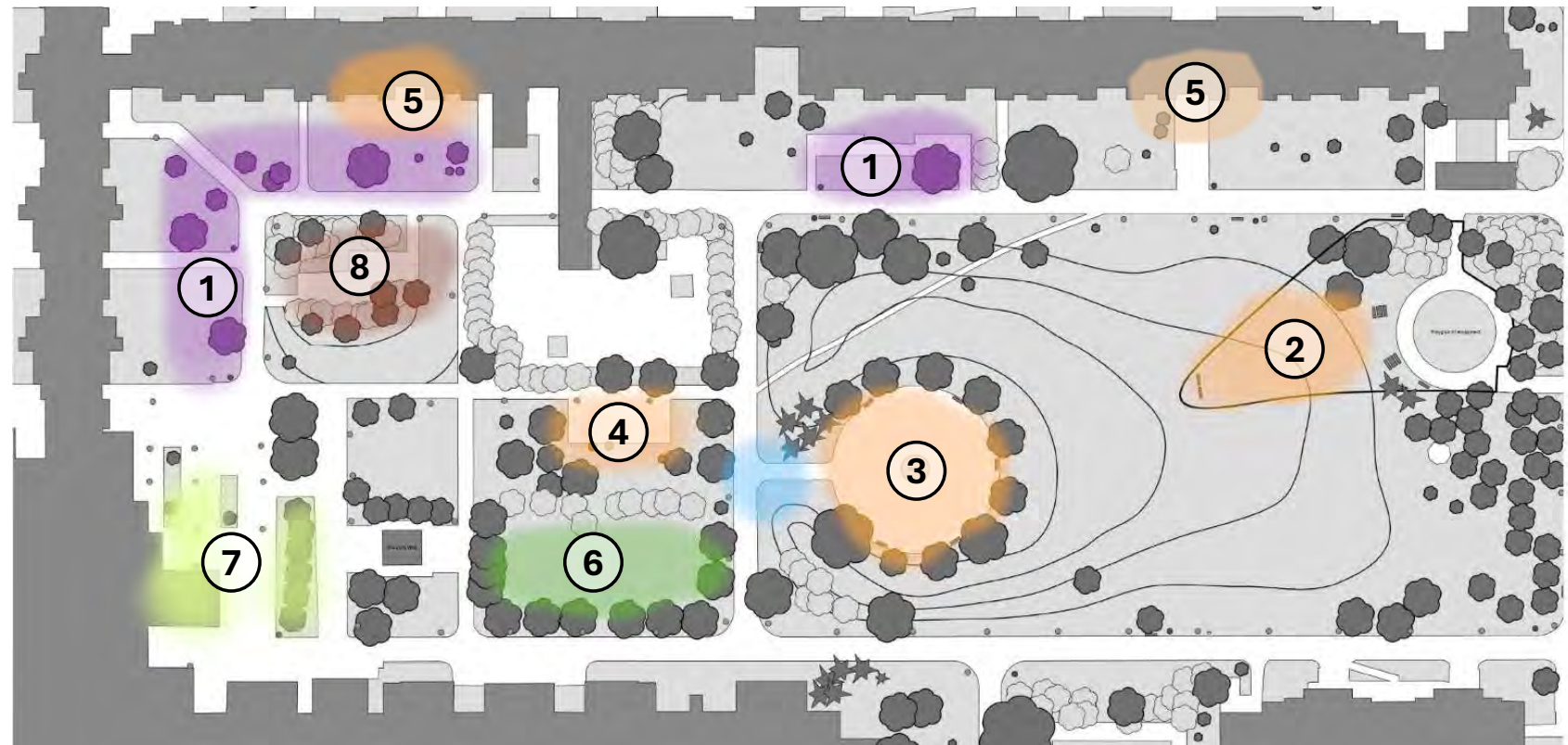
Concept

- Active and resting spaces
- For all the generations
- Connect the people, community builder
- Central area in connection with the other yards
- Bee friendly perennials
- Visual and physical connection
- Equip the courtyard with benches and bins



Concept areas

- Perennials
- Sports
- Community garden
- Coffee terrace
- Connection
- Water



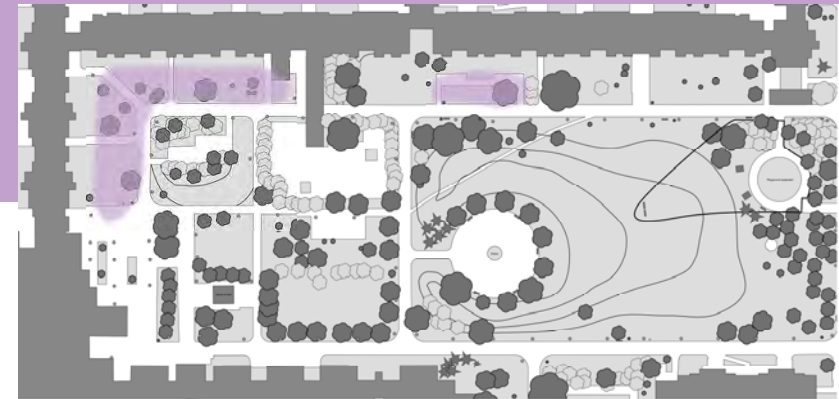
source: own visualization

1. Perennials

The perennials for the free spaces were customized for the anthropogenic soils, as well as for dryer climates, as the annual precipitation in Kagan amounts to 561,8mm on average per year.

The following species will be used:

- *Achillea Millefolium*-Hybrid 'Lachsschönheit' – A red yarrow
- *Aster amellus* 'Sonora' – A deep violet Aster
- *Centaurea glastifolia* – A yellow knapweed
- *Helianthus tuberosus* – A sunflower with edible tubers
- *Iris Barbata*-*Elatior*-Hybrid 'Nightfall' – A black-blue iris
- *Kniphofia preacox* – A red-yellow torch lily
- *Macleaya cordata* var. *yedoensis* – A large feather poppy
- *Salvia nemorosa* 'Ostfriesland' – A deep blue-violet sage
- *Sedum* Hybride 'Matrona' – A bronze-leaved sedum
- *Thymus vulgaris* 'Compactum' – A small thyme with light-violet flowers



source: own foto; own visualization

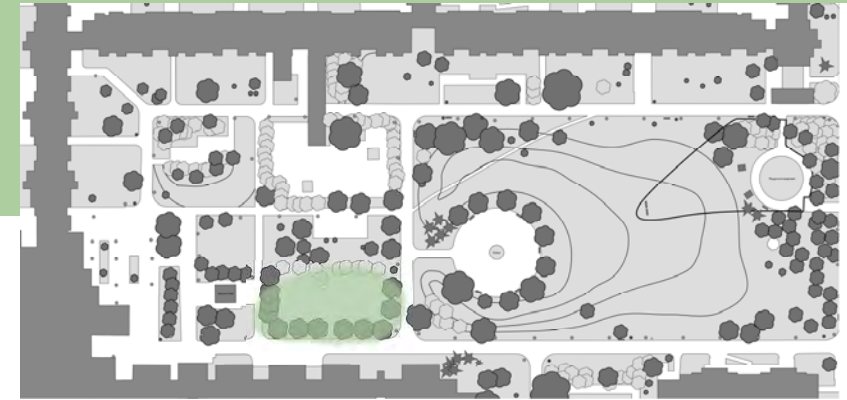
2.-5. Sports

- 2. Playground:** Give the shape of the playground and the slope usage by a slide and improving the equipment by adding elements and using ecofriendly material
- 3. Free gym:** Revitalizing the place and make it useable again by adding free gym instruments around the statue
- 4. Volleyball:** Revitalizing the place and make it useable again by making it a volleyball court
- 5. Bouldering:** Improve the connection between the courtyards 5 and 7; Soften the physical border by adding seating steps with planters; Create a space for teenagers



6. Community gardens

- Gardening is beneficial to mental and physical health.
- People with and without a handycap should have the possibility to be part of the community garden, therefore we chose two kinds of raised flower beds.



7. Connection

- Making a smoother and flatter connection between the ground and the stairs
- Use the walls as green walls
- Open up the space to give a focus point to the little park area which is in front, emphasize it with the road that leads there
- Create a little resting space, arrival point with benches around the statue



Source: Own photos | benches: <https://at.pinterest.com/pin/1082623198107143428/> | staircase: <https://pin.it/2rjT0MrLt>

8. Coffee terrace

- Create a peaceful, quiet area
- Outside cafe place
- Reuse the pergola with plants and benches under

